

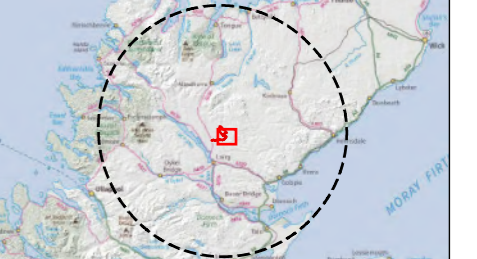
- Legend:**
- Site Boundary
 - Proposed Turbine Locations
 - 5 km Intervals from Outer Turbines
 - 45 km LVIA Study Area
 - ∠ 27° Field of View
 - ∠ 39.6° Field of View
 - ∠ 65.5° Field of View

AOD: 178 m
 E: 263137 N: 915279
 Nearest Chleansaig turbine: 1
 Distance to nearest turbine: 1.53 km

VP1 - This viewpoint is located on a track near a small cluster of buildings at Dalnessie, to the south-east of the turbine area. The track connects to the A836 to the south-west of the turbine area, and passes north to the east of the turbine area.

Notes:
 This map contains data from the following sources:
 ESB, RSK, LUC, NatureScot, SUSTRANS, LDWA, HLC

Coordinate System: British National Grid
 Projection: Transverse Mercator
 Datum: OSGB 1936
 Units: Meter

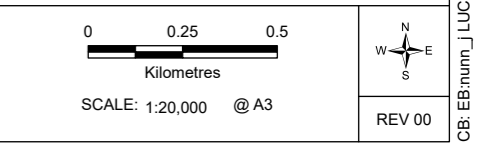


Rev	Date	Description	Drn	Chk	App
00	22/10/2021	First Draft	JN	NE	NE

Chleansaig Wind Farm



TITLE: Figure 6THC.2.1: Viewpoint 1 Right of Way near Dalnessie



Extent of 50mm single frame used to construct panorama



OS reference: 263137E 915279N
 Distance to nearest turbine: 1.53 km

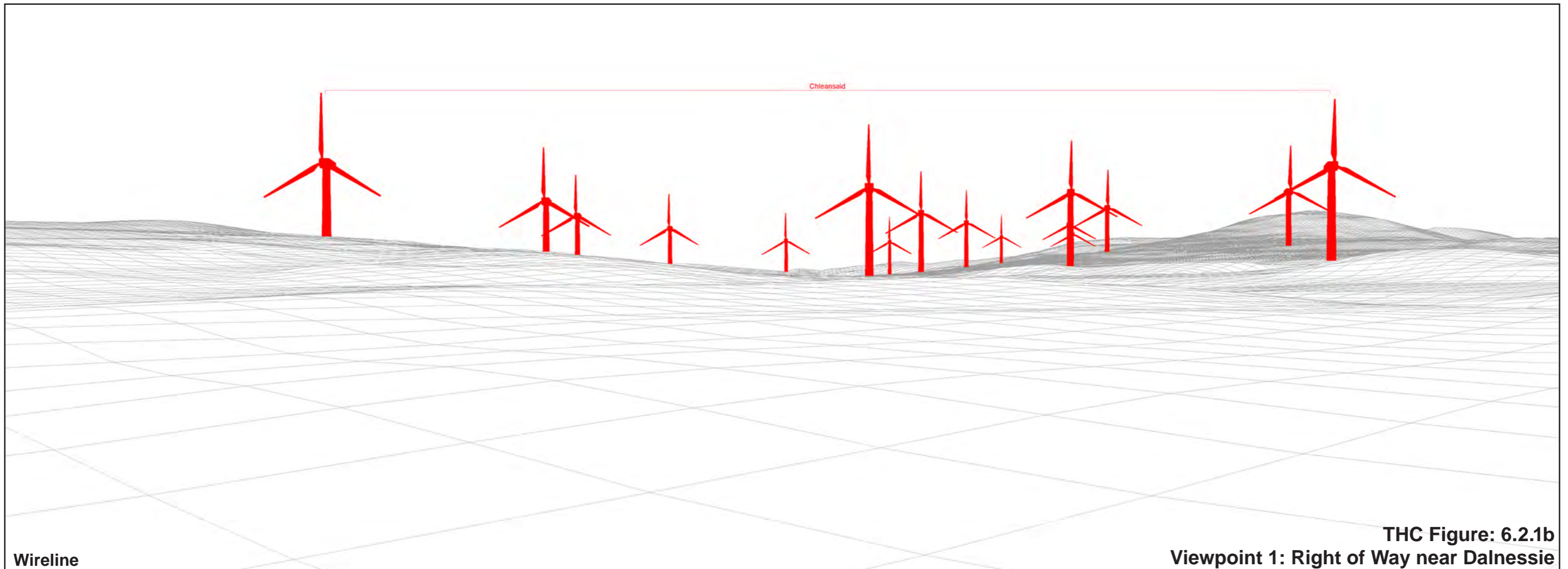
Camera: Nikon D750
 Focal Length: 50mm vertical (27°) x 28mm horizontal (65.5°)
 Camera height: 1.5 m

Photography Date: 22/02/2021
 Photography Time: 12:10

The images contained on this page and the following page are not representative of scale and distance from the actual viewpoint and show the wind farm development in its wider landscape context only.



Existing View



Wireline

THC Figure: 6.2.1b
Viewpoint 1: Right of Way near Dalnessie



OS reference: 263137E 915279N
Distance to nearest turbine: 1.53 km

Camera: Nikon D750
Focal Length: 50mm
Camera height: 1.5 m

Photography Date: 22/02/2021
Photography Time: 12:10

Chleasaid Wind Farm
THC Figure: 6.2.1c

When viewed at a comfortable arm's length (approx. 500mm), this printed image is representative of our detailed central vision, but is not representative of scale and distance.

Viewpoint 1: Right of Way near Dalnessie



OS reference: 263137E 915279N
Distance to nearest turbine: 1.53 km

Camera: Nikon D750
Focal Length: 75mm
Camera height: 1.5 m

Photography Date: 22/02/2021
Photography Time: 12:10

Chleainsaid Wind Farm
THC Figure: 6.2.1d

This image should be viewed at a comfortable arm's length (approx. 500mm)

Viewpoint 1: Right of Way near Dalnessie



OS reference: 263137E 915279N
 Distance to nearest turbine: 1.53 km

Camera: Nikon D750
 Focal Length: 75mm
 Camera height: 1.5 m

Photography Date: 22/02/2021
 Photography Time: 12:10

Chleasaid Wind Farm
 THC Figure: 6.2.1e

This image should be viewed at a comfortable arm's length (approx. 500mm)

Viewpoint 1: Right of Way near Dalnessie - Monochrome Analysis