

Legend:

- Site Boundary
- + Proposed Turbine Locations
- 5 km Intervals from Outer Turbines
- 45 km LVIA Study Area
- o Viewpoint
- / 53.5° Field of View
- \ 90° Field of View

Potential Turbine Visibility (Tip Height)

- 1 - 4 Turbines Visible
- 5 - 8 Turbines Visible
- 9 - 12 Turbines Visible
- 13 - 16 Turbines Visible

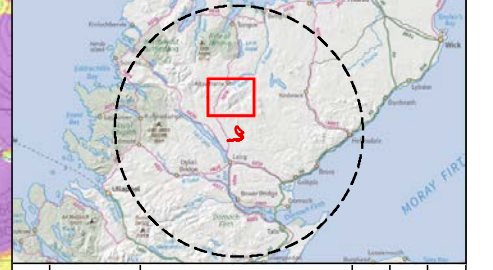
Notes:
 The ZTV is calculated to turbine tip height (200 m for T1-T11, T16 and 180 m for T12-T15) from a viewing height of 2 m above ground level.

The terrain model assumes bare ground and is derived from OS Terrain 5 height data (obtained in September 2021).

Earth curvature and atmospheric refraction have been taken into account. The ZTV was calculated using ArcMap 10.8.1.

Notes:
 This map contains data from the following sources:
 ESB, RSK, LUC, NatureScot, SUSTRANS, LDWA, HLC

Coordinate System: British National Grid
 Projection: Transverse Mercator
 Datum: OSGB 1936
 Units: Meter



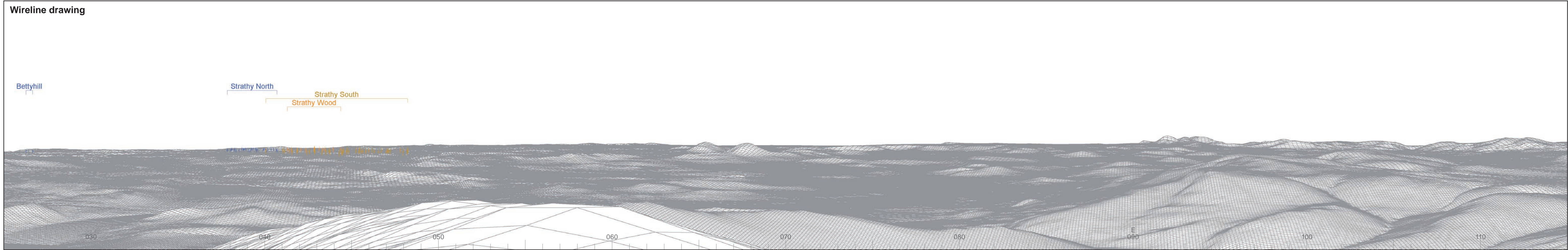
Rev	Date	Description	Drn	Chk	App
00	22/10/2021	First Draft	JN	NE	NE

Chleansaid Wind Farm

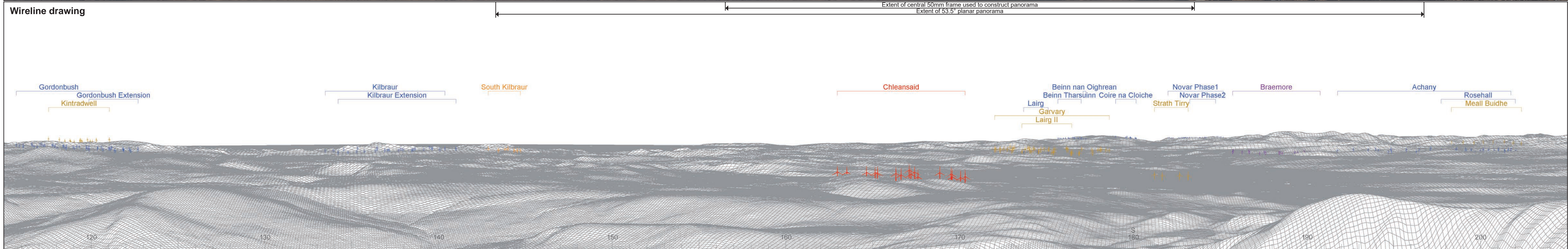
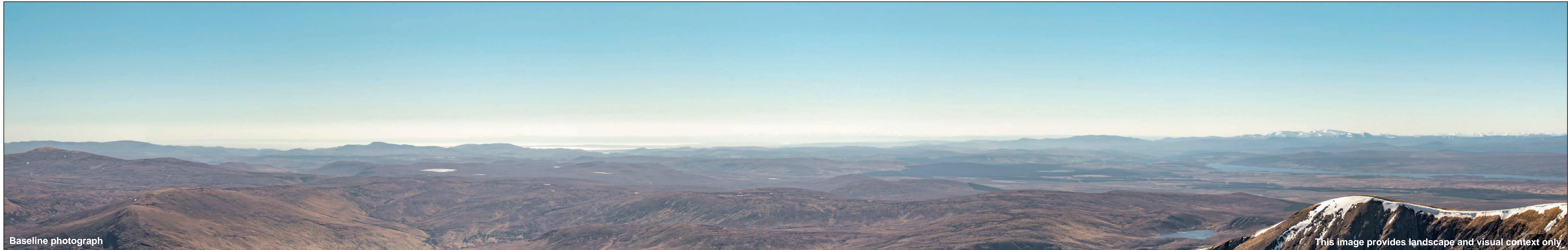
TITLE:
 Figure 6.2.8: Viewpoint 8
 Ben Klibreck, Meall nan Con

SCALE: 1:50,000 @ A3

REV 00



© Crown copyright and database rights 2021. Ordnance Survey data. Licence number: 0100051673



OS reference: 258524E 929910N
 AOD: 954 m
 Direction of view: 160°
 Nearest turbine: 11.16 km

Horizontal field of view: 90° (cylindrical projection)
 Principal distance: 522 mm
 Paper size: 841 x 297 mm (half A1)
 Correct printed image size: 820 x 260 mm

Camera: Nikon D750
 Lens: 50mm Fixed Focal Length
 Camera height: 1.5 m

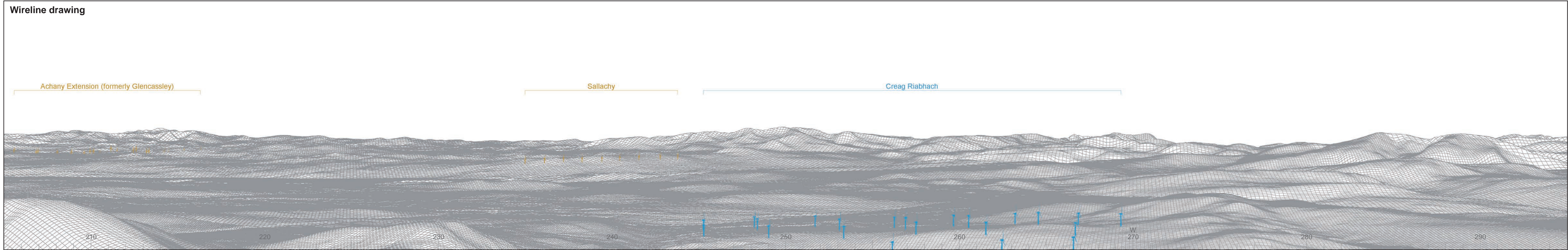
Photography Date: 20/04/2020
 Photography Time: 12:00:00

Wind Farm Developments key
 (by status):

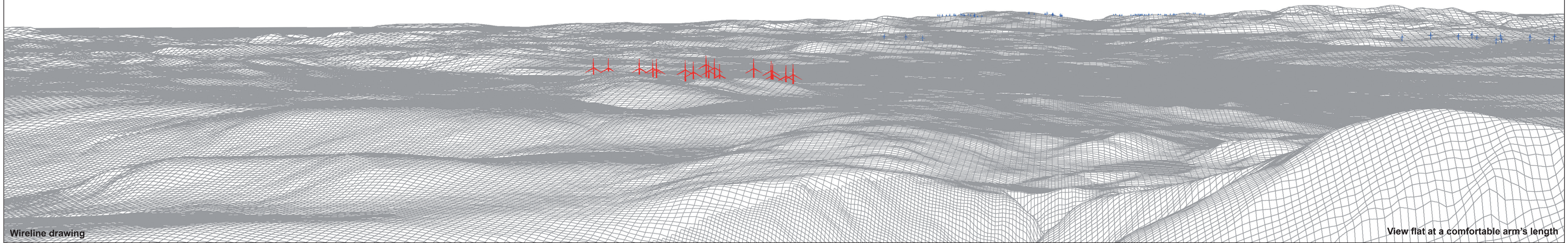
Proposed scheme
 Operational
 Under construction

Consented
 Application
 Appeal/PLI

Chleansaid Wind Farm
Figure: 6.2.8b
 Viewpoint 8: Ben Klibreck, Meall nan Con



6 12 7 5 13 8 14 1 9 2 15 3 4 16 10 11



Wireline drawing

View flat at a comfortable arm's length

OS reference: 258524E 929910N
 AOD: 954 m
 Direction of view: 170°
 Nearest turbine: 11.16 km

Horizontal field of view: 53.5° (planar projection)
 Principal distance: 812.5 mm
 Paper size: 841 x 297 mm (half A1)
 Correct printed image size: 820 x 260 mm

Wind Farm Developments key (by status):

Proposed scheme	Consented
Operational	Application
Under construction	Appeal/PLI



© Crown copyright and database rights 2021. Ordnance Survey data. Licence number: 0100051673



Photomontage

View flat at a comfortable arm's length



OS reference: 258524E 929910N
AOD: 954 m
Direction of view: 170°
Nearest turbine: 11.16 km

Horizontal field of view: 53.5° (planar projection)
Principal distance: 812.5 mm
Paper size: 841 x 297 mm (half A1)
Correct printed image size: 820 x 260 mm

Camera: Nikon D750
Lens: 50mm Fixed Focal Length
Camera height: 1.5 m

Photography Date: 20/04/2020
Photography Time: 12:00:00

Chleainsaid Wind Farm

Figure: 6.2.8e

Viewpoint 8: Ben Klibreck, Meall nan Con