

- Legend:**
- Site Boundary
  - + Proposed Turbine Locations
  - 5 km Intervals from Outer Turbines
  - 45 km LVIA Study Area
  - o Viewpoint
  - / 53.5° Field of View
  - \ 90° Field of View
- Potential Turbine Visibility (Tip Height)**
- 1 - 4 Turbines Visible
  - 5 - 8 Turbines Visible
  - 9 - 12 Turbines Visible
  - 13 - 16 Turbines Visible

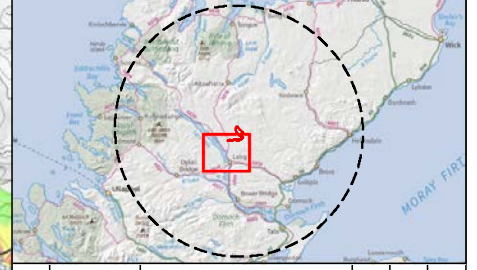
**Notes:**  
 The ZTV is calculated to turbine tip height (200 m for T1-T11, T16 and 180 m for T12-T15) from a viewing height of 2 m above ground level.

The terrain model assumes bare ground and is derived from OS Terrain 5 height data (obtained in September 2021).

Earth curvature and atmospheric refraction have been taken into account. The ZTV was calculated using ArcMap 10.8.1.

Notes:  
 This map contains data from the following sources:  
 ESB, RSK, LUC, NatureScot, SUSTRANS, LDWA, HLC

Coordinate System: British National Grid  
 Projection: Transverse Mercator  
 Datum: OSGB 1936  
 Units: Meter

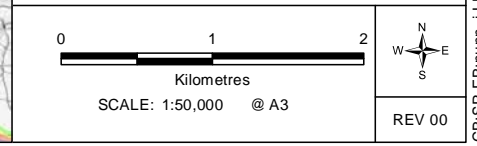


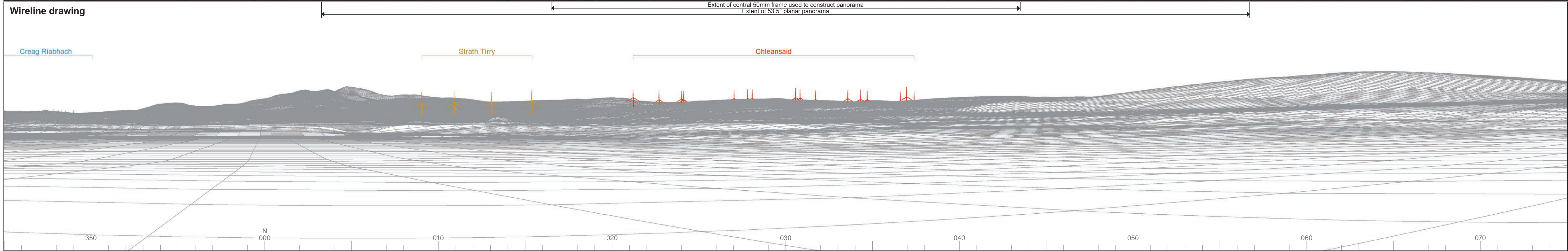
Rev	Date	Description	Drn	Chk	App
00	22/10/2021	First Draft	JN	NE	NE

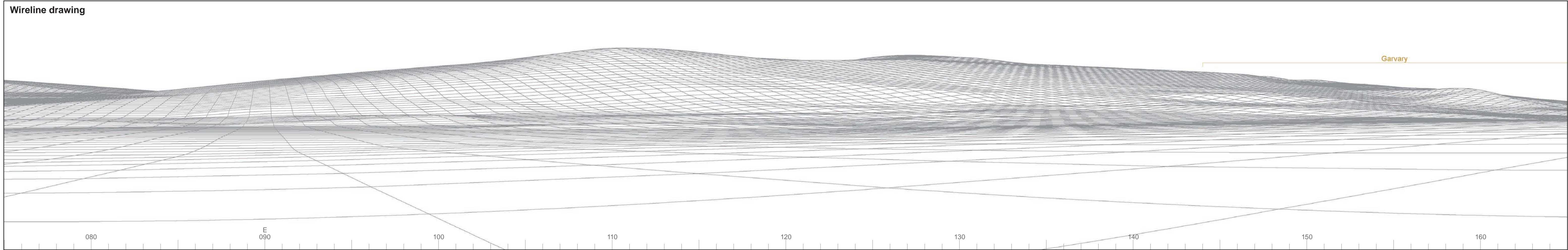
**Cleansaid Wind Farm**



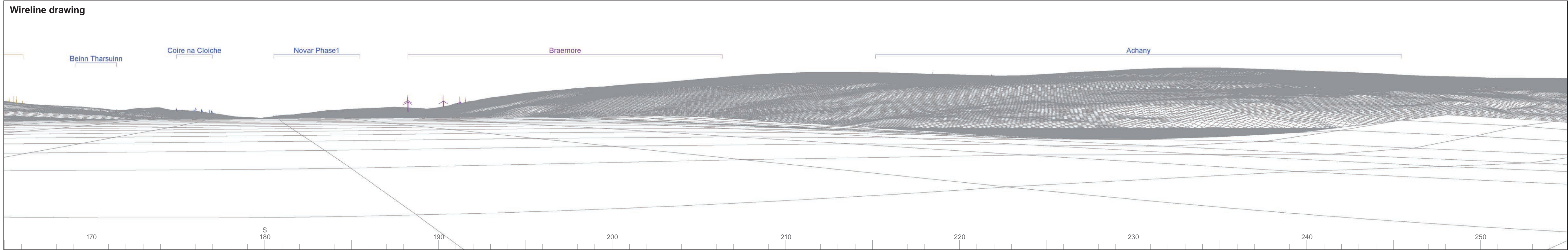
**TITLE:**  
 Figure 6.2.4: Viewpoint 4  
 Dalchork Bird Hide

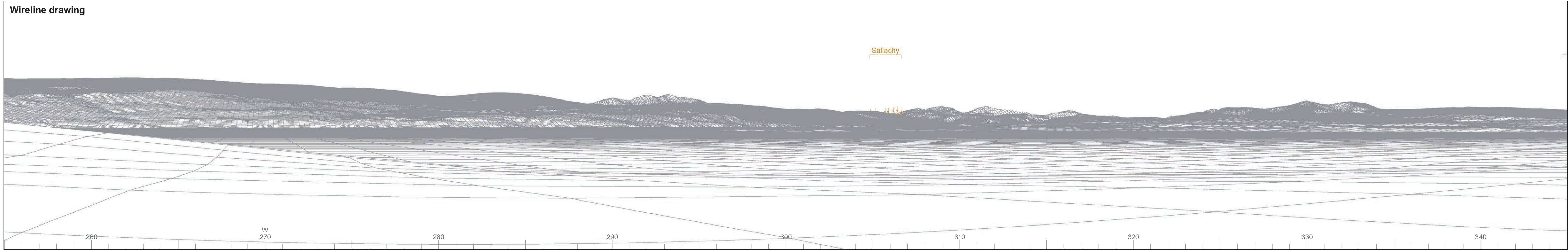


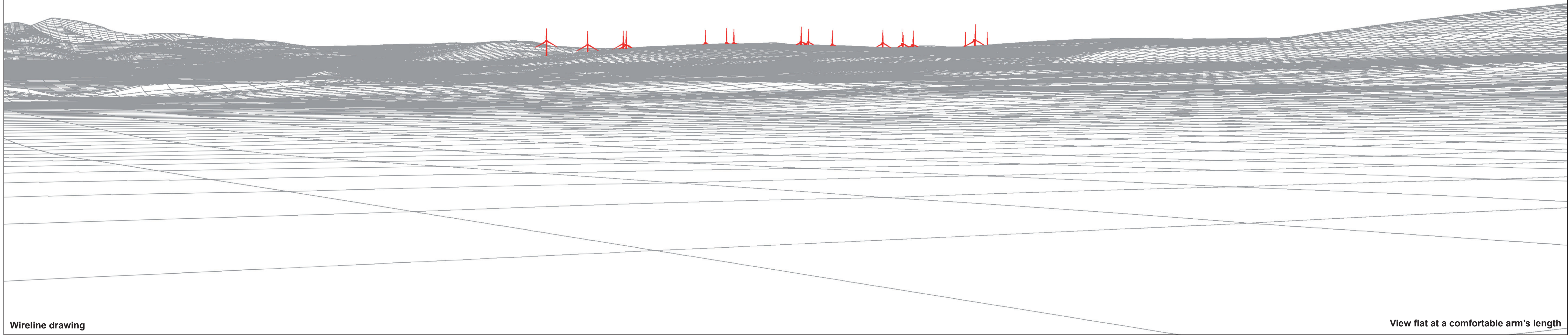




© Crown copyright and database rights 2021 Ordnance Survey data. Licence number: 0100051673







Wireline drawing

View flat at a comfortable arm's length



OS reference: 256832E 909373N  
 AOD: 93 m  
 Direction of view: 30°  
 Nearest turbine: 8.15 km

Horizontal field of view: 53.5° (planar projection)  
 Principal distance: 812.5 mm  
 Paper size: 841 x 297 mm (half A1)  
 Correct printed image size: 820 x 260 mm

Wind Farm Developments key  
 (by status):

Proposed scheme	Consented
Operational	Application
Under construction	Appeal/PLI

Chleansaid Wind Farm  
**Figure: 6.2.4e**  
 Viewpoint 4: Dalchork Bird Hide

© Crown copyright and database rights 2021 Ordnance Survey data Licence number: 0100051673