

**Legend:**

- Site Boundary
- ◆ Proposed Turbine Locations
- 5 km Intervals from Outer Turbines
- 45 km LVIA Study Area
- Viewpoint
- ∠ 53.5° Field of View
- ∠ 90° Field of View

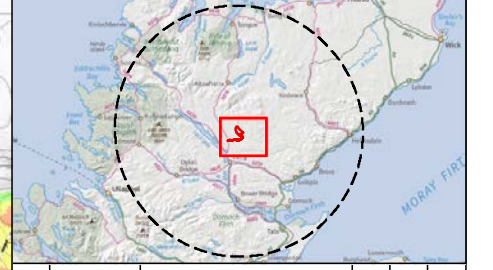
**Potential Turbine Visibility (Tip Height)**

- 1 - 4 Turbines Visible
- 5 - 8 Turbines Visible
- 9 - 12 Turbines Visible
- 13 - 16 Turbines Visible

**Notes:**  
 The ZTV is calculated to turbine tip height (200 m for T1-T11, T16 and 180 m for T12-T15) from a viewing height of 2 m above ground level.  
 The terrain model assumes bare ground and is derived from OS Terrain 5 height data (obtained in September 2021).  
 Earth curvature and atmospheric refraction have been taken into account. The ZTV was calculated using ArcMap 10.8.1.

Notes:  
 This map contains data from the following sources:  
 ESB, RSK, LUC, NatureScot, SUSTRANS, LDWA, HLC

Coordinate System: British National Grid  
 Projection: Transverse Mercator  
 Datum: OSGB 1936  
 Units: Meter

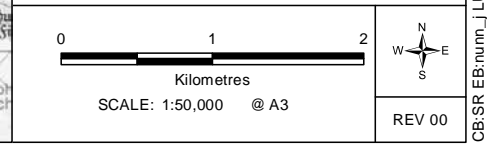


Rev	Date	Description	Drn	Chk	App
00	22/10/2021	First Draft	JN	NE	NE

**Chleansaid Wind Farm**



**TITLE:**  
 Figure 6.2.1: Viewpoint 1  
 Right of Way near Dalnessie

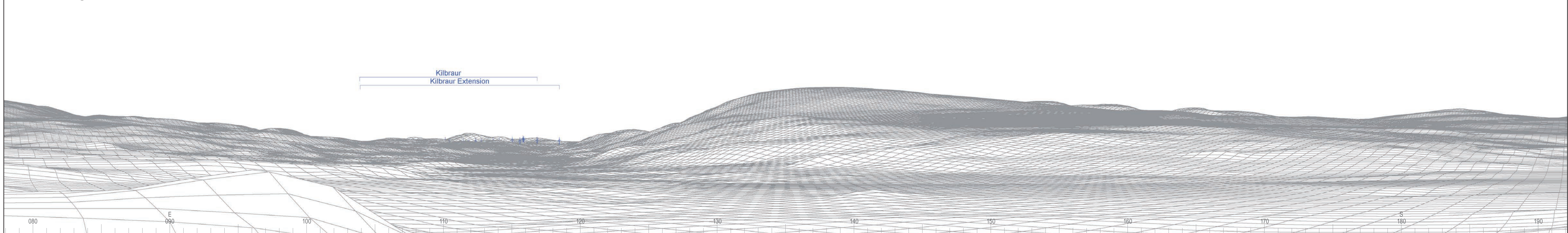




Baseline photograph

This image provides landscape and visual context only

Wireline drawing



OS reference: 263137E 915279N  
 AOD: 178 m  
 Direction of view: 135°  
 Nearest turbine: 1.53 km

Horizontal field of view: 90° (cylindrical projection)  
 Principal distance: 522 mm  
 Paper size: 841 x 297 mm (half A1)  
 Correct printed image size: 820 x 260 mm

Camera: Nikon D750  
 Lens: 50mm Fixed Focal Length  
 Camera height: 1.5 m

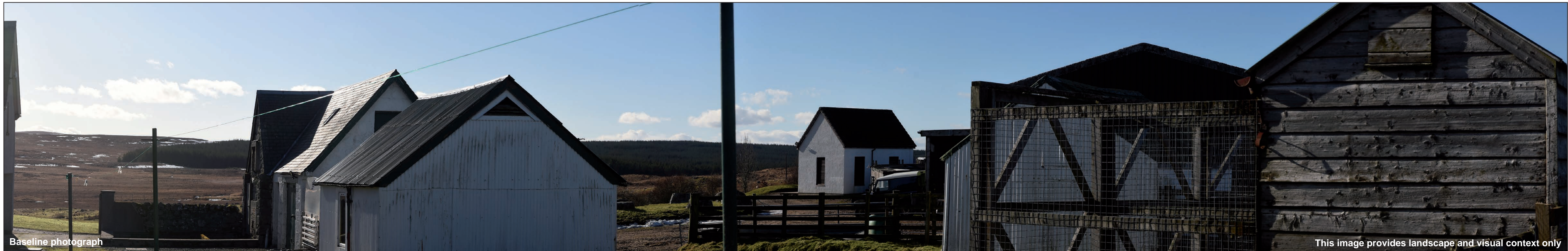
Photography Date: 22/02/2021  
 Photography Time: 12:10:00

Wind Farm Developments key (by status):

Proposed scheme  
 Operational  
 Under construction

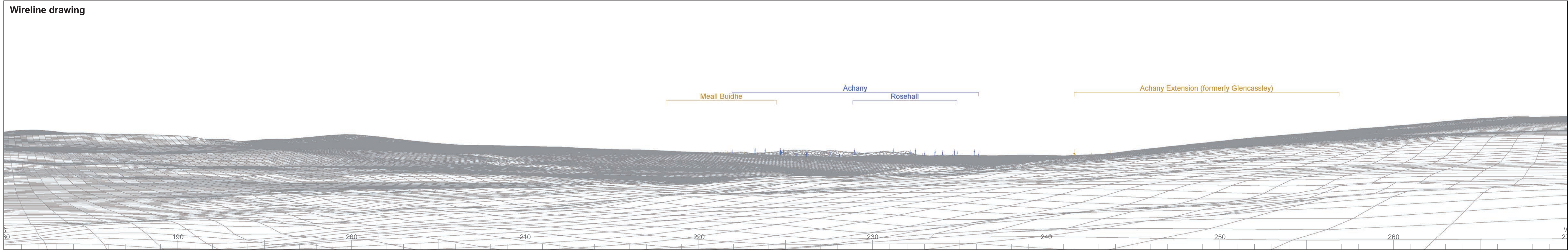
Consented  
 Application  
 Appeal/PLI

© Crown copyright and database rights 2021. Ordnance Survey data. Licence number: 0100051673



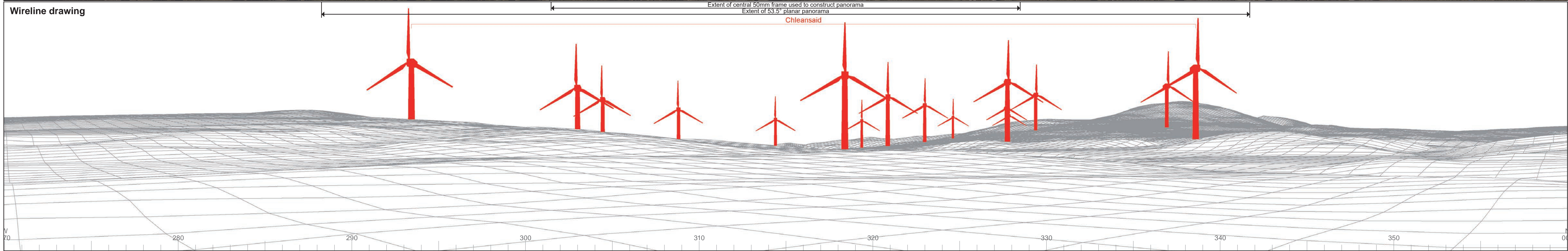
Baseline photograph

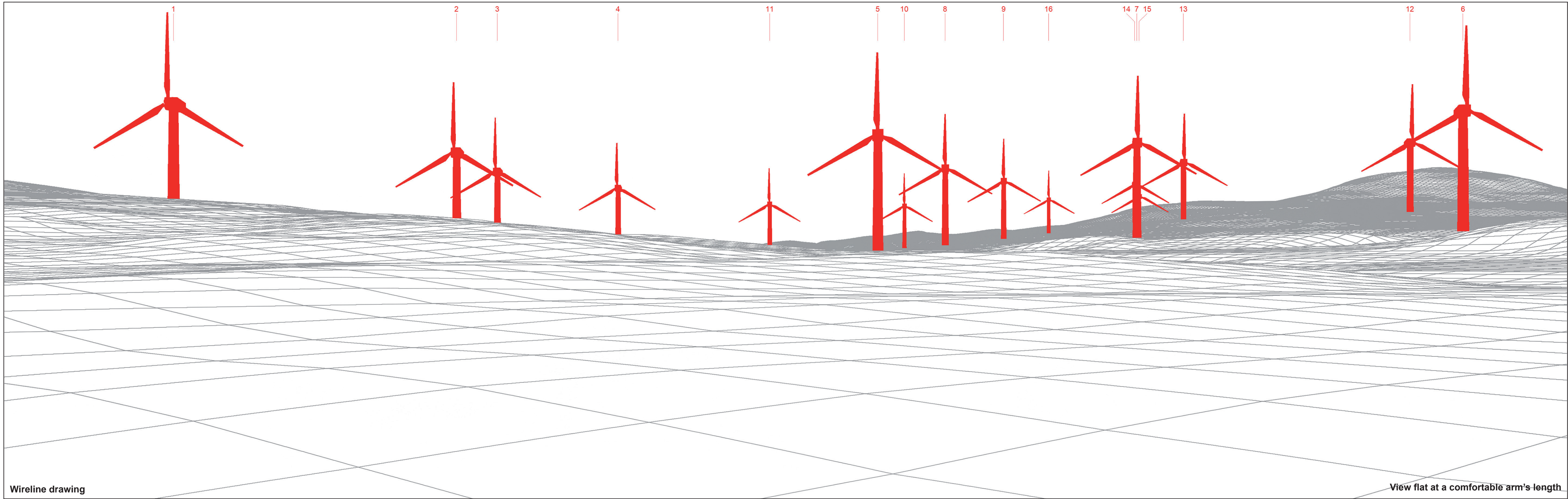
This image provides landscape and visual context only



Wireline drawing

© Crown copyright and database rights 2021. Ordnance Survey data. Licence number: 0100051673





© Crown copyright and database rights 2021 Ordnance Survey data. Licence number: 0100051673

Wireline drawing

View flat at a comfortable arm's length



OS reference: 263137E 915279N  
 AOD: 178 m  
 Direction of view: 135°  
 Nearest turbine: 1.53 km

Horizontal field of view: 53.5° (planar projection)  
 Principal distance: 812.5 mm  
 Paper size: 841 x 297 mm (half A1)  
 Correct printed image size: 820 x 260 mm

Wind Farm Developments key  
 (by status):

Proposed scheme	Consented
Operational	Application
Under construction	Appeal/PLI

Chleansaid Wind Farm  
**Figure: 6.2.1d**  
 Viewpoint 1: Right of Way near Dalnessie



Photomontage

View flat at a comfortable arm's length



OS reference: 263137E 915279N  
 AOD: 178 m  
 Direction of view: 135°  
 Nearest turbine: 1.53 km

Horizontal field of view: 53.5° (planar projection)  
 Principal distance: 812.5 mm  
 Paper size: 841 x 297 mm (half A1)  
 Correct printed image size: 820 x 260 mm

Camera: Nikon D750  
 Lens: 50mm Fixed Focal Length  
 Camera height: 1.5 m

Photography Date: 22/02/2021  
 Photography Time: 12:10:00

Chleainsaid Wind Farm  
**Figure: 6.2.1e**  
 Viewpoint 1: Right of Way near Dalnessie