

**Legend:**

- Site Boundary
- Proposed Turbine Locations
- 5 km Intervals from Outer Turbines
- 20 km Interval from Outer Turbines
- 45 km LVIA Study Area

**Cumulative Wind Farms (by Status)**

- Operational
- Consented

**Potential Theoretical Visibility**

- Other Wind Farm(s) Visible
- Chleansaid Wind Farm Visible Only
- Chleansaid and Other Wind Farm(s) Visible

**Notes:**  
This map contains data from the following sources:  
ESB, RSK, LUC

Coordinate System: British National Grid  
Projection: Transverse Mercator  
Datum: OSGB 1936  
Units: Meter

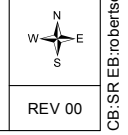
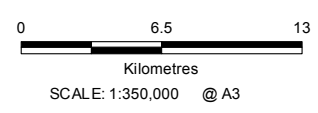


Rev	Date	Description	Drn	Chk	App
00	29/09/2021	First Draft	SR	NE	NE

**Chleansaid Wind Farm**



**TITLE:** Figure 6.1.8a:  
South-west Wind Farm Group Comparative ZTV (Operational and Consented)



**Notes:**  
The ZTV is calculated to turbine tip height from a viewing height of 2 m above ground level. The ZTV extents for all wind farms are based on SNH guidance (Visual Representation of Wind farms, SNH, 2017).

The terrain model assumes bare ground and is derived from OS Terrain 5 height data (obtained in September 2021).

Earth curvature and atmospheric refraction have been taken into account. The ZTV was calculated using ArcMap 10.8.1.