

WELCOME TO OUR PUBLIC CONSULTATION EVENT FOR CRAIGNEIL WIND FARM



Stock photography

ESB is holding our first round of consultation events for the proposed redesign of the consented Craigneil Wind Farm.

This exhibition event is a key part of our pre-application consultation and we would like to thank you for taking the time to attend today. We believe in meaningful engagement on all of our projects and we want to hear from the local community on our redesign plans for our consented Craigneil Wind Farm.

Constructive consultation helps us to identify any potential issues and concerns, as well as benefits and opportunities. Comments and feedback from these events can be considered while we are still developing the design of the proposal.

We will hold a further round of exhibition events, planned for September 2024, and we will aim to submit a planning application to Aberdeenshire Council later in 2024.

Site description

The Proposed Development is located approximately 6.5km to the north west of Stonehaven and 11km south east of Banchory.

The site is an exposed location, with predominantly open moorland currently used for low intensity grazing.

Developer

ESB, established in 1927, is Ireland's part state-owned electricity utility company and is a leading independent power generator in the UK.

ESB has offices in Glasgow and is heavily involved in onshore wind, offshore wind, electric vehicle infrastructure and renewable heating systems, such as the low-carbon heating and cooling system installed in the V&A Dundee.



THE PROPOSED DEVELOPMENT



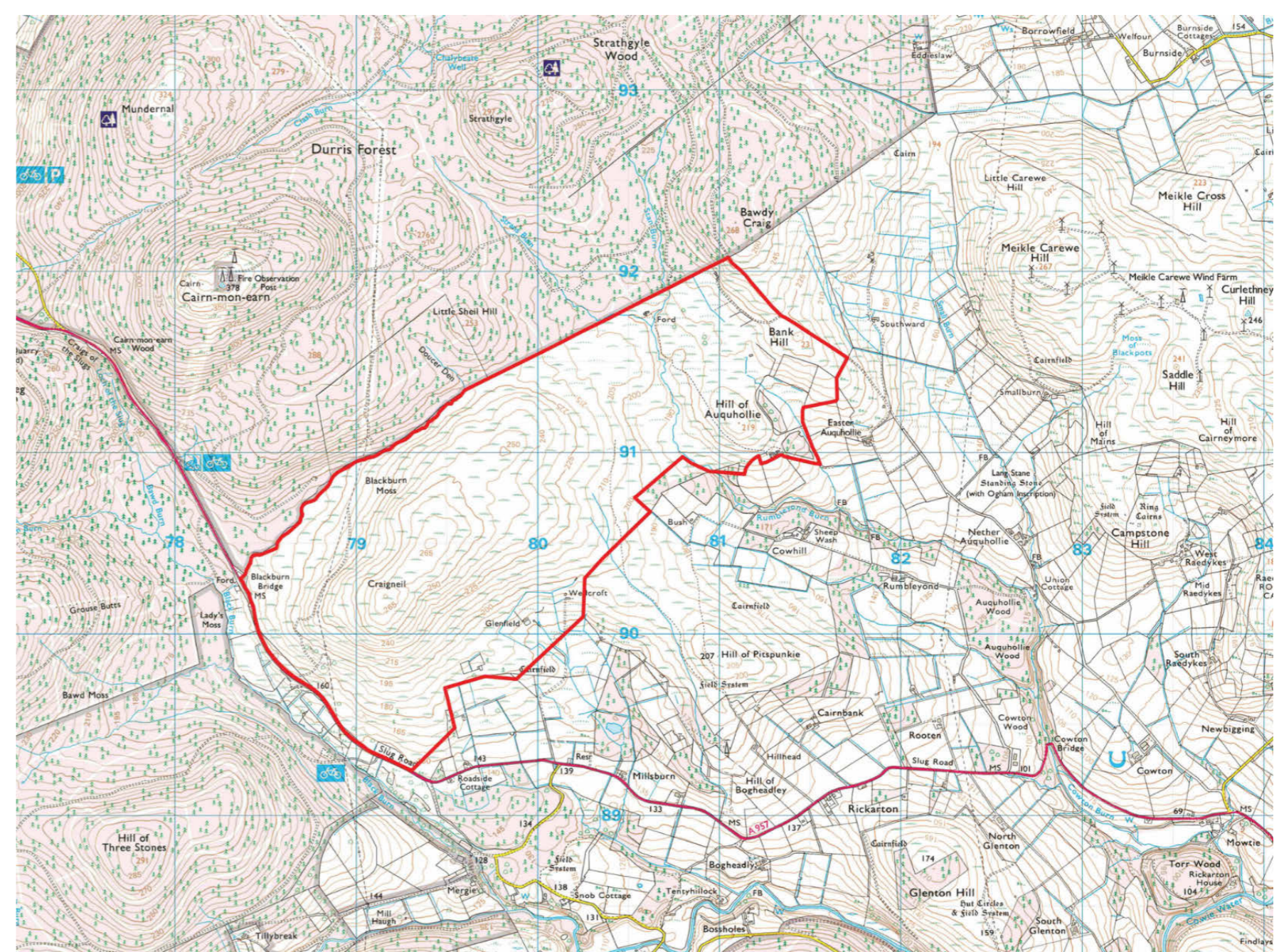
Stock photography

The Craigneil Wind Farm project received consent in September 2022. The consented Craigneil Wind Farm is for 11 turbines at 135m in height and is located approximately 6.5km to the north west of Stonehaven and 11km south east of Banchory.

The project was originally submitted into planning in early Summer 2018 and took over four years to achieve planning consent. Technology and commercial viability considerations have moved on since the original project design and we are now looking at a redesigned project of up to 7 turbines at a maximum of 180m to blade tip. In line with the terms of the consented project, ESB is likely to seek planning permission for a temporary period of 35 years. Today's exhibition showcases the redesign plans.

Since we first introduced the proposals, we have received a warm welcome in Stonehaven and the surrounding area. We have been proud to be the headline supporter of the Feein' Market in 2022, 2023 and most recently in 2024. We have also previously supported the Stonehaven Christmas Lights and Stonehaven Fireballs.

The redesign plans will generate more renewable electricity than the consented project - it will be able to generate the energy equivalent of approximately 25,000 homes. Further assessment will be undertaken to provide a finalised figure ahead of the new planning application submission.

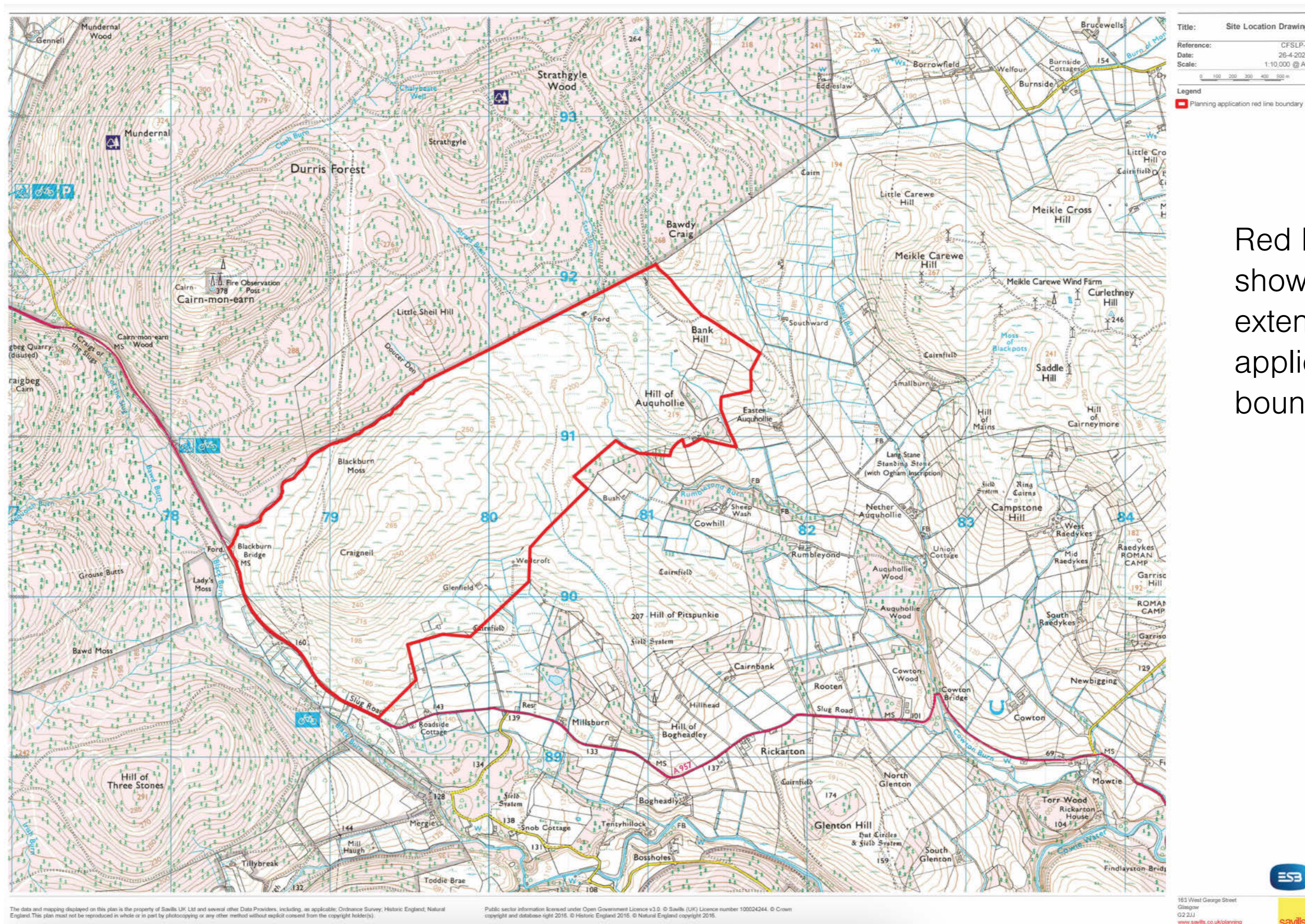


The redesigned Craigneil Wind Farm proposal comprises:

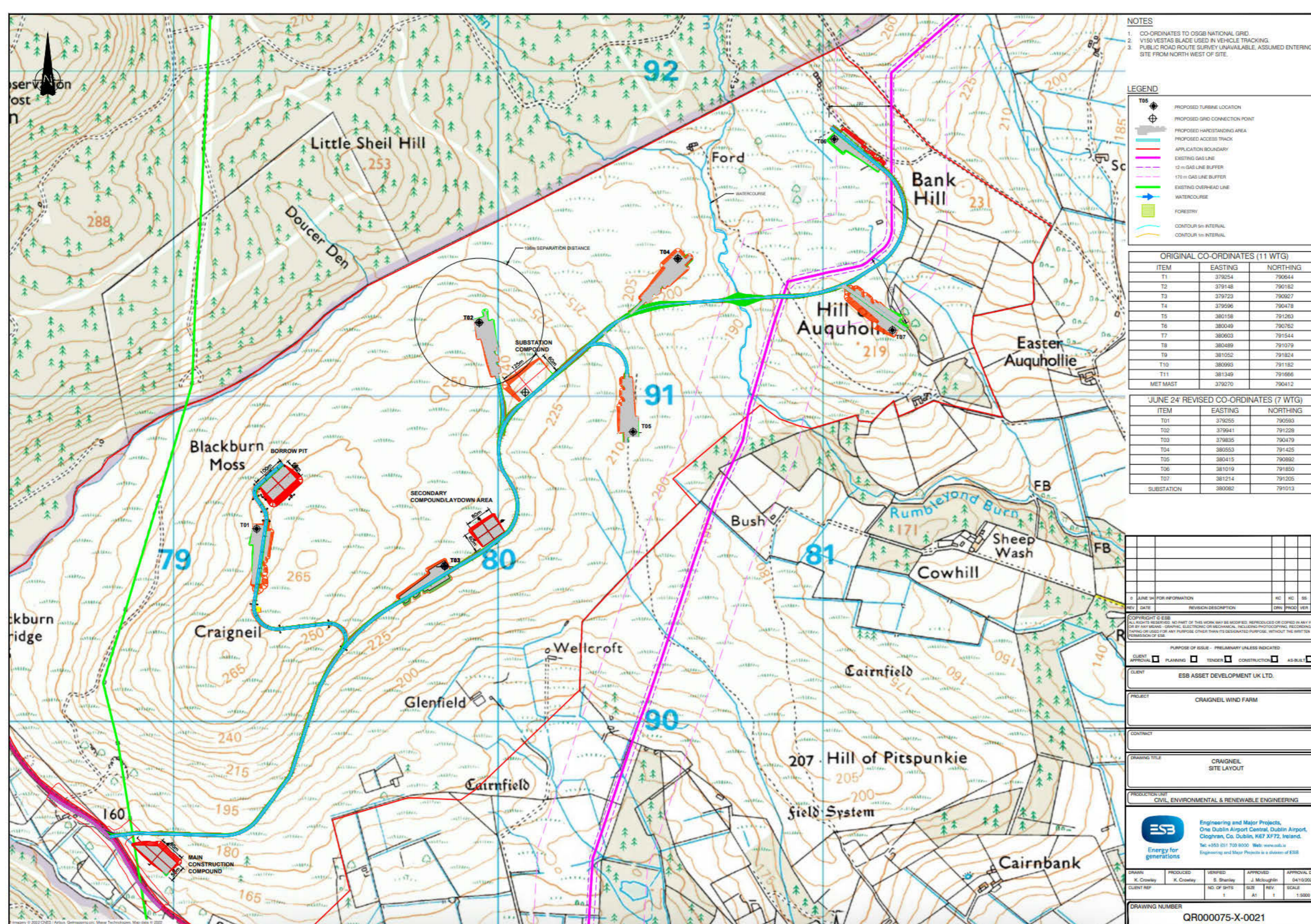
- Up to 7 turbines, with a maximum height of 180m to blade tip, and a generating capacity of around 40MW. Although fewer turbines, the generating capacity has increased from 35.2MW to around 40MW;
- On-site access tracks linking the turbines and connecting to the A957;
- On-site grid substation;
- Site office and staff welfare facilities;
- An offer of a Community Benefits Package and Shared Community Ownership.



SITE BOUNDARY AND PROPOSED LAYOUT



Red line shows the extent of the application boundary



Proposed turbine layout and related infrastructure

ENVIRONMENTAL IMPACT ASSESSMENT



ESB is using data from the consented project as well as new environmental studies to help shape the design and assess the potential impact of the redesigned project.

We will undertake an Environmental Impact Assessment (EIA) to assess the effects of the Proposed Development on the natural, physical and human environment. We are carrying out extensive surveys and work includes:

- Landscape character and visual assessment;
- Cultural heritage and archaeology;
- Ecological and ornithological;
- Geology, hydrogeology, hydrology and peat;
- Noise and vibration;
- Shadow Flicker;
- Traffic and transportation;
- Aviation and radar;
- Telecommunications and electromagnetic interference.

Development Timeline

- **Summer 2018:** original Craigneil Wind Farm application submission (exhibitions held in 2016).
- **September 2022:** consent granted for Craigneil Wind Farm for 11 turbines, capacity at 35.2MW.
- **May 2024:** introduce plans for the redesign - up to 7 turbines, capacity at around 40MW.
- **Summer 2024:** consultation with local community - exhibitions in June and September 2024.
- **Autumn/Winter 2024:** plan to submit the new application for the redesigned project.
- **Early 2025:** expected decision by Aberdeenshire Council on redesigned project.



LANDSCAPE AND VISUAL IMPACT



Stock photography

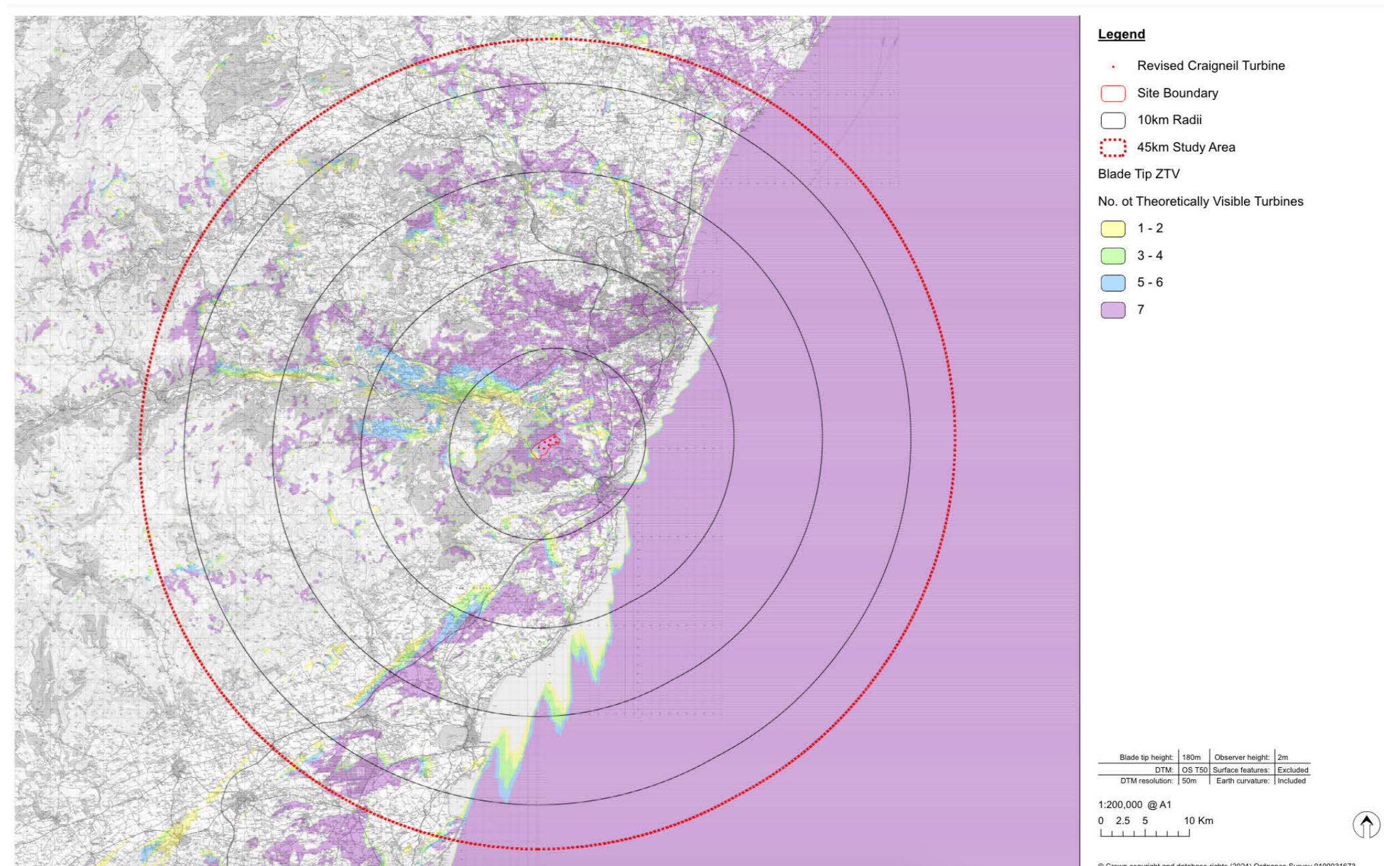
A new Landscape and Visual Impact Assessment will consider the potential effects of the Proposed Development on the surrounding landscape and visual amenity, including new photomontages.

A Zone of Theoretical Visibility (ZTV) is a computer-generated tool that establishes the likely extent of the visibility of a Proposed Development and key visual receptors.

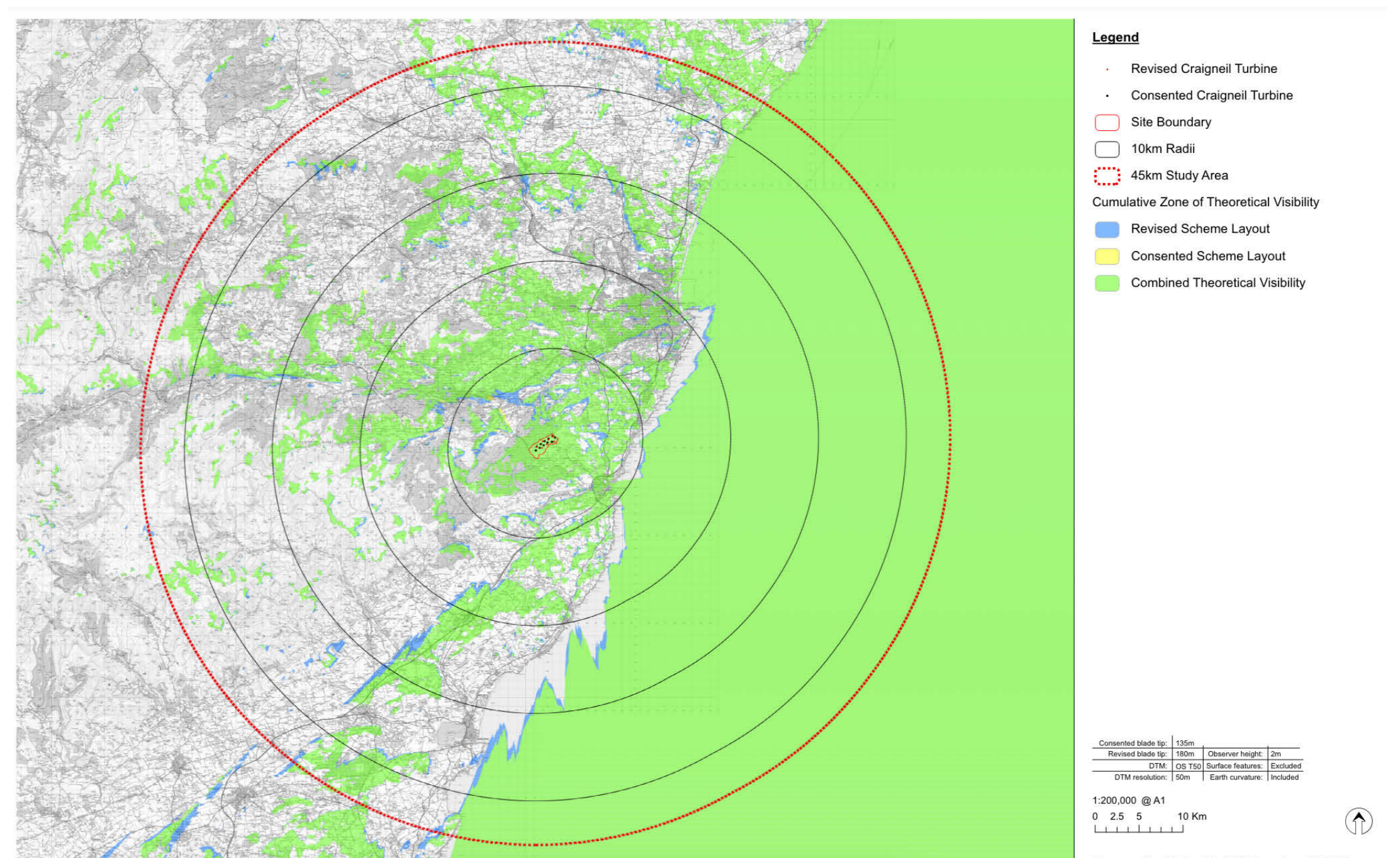
The ZTV indicates the areas where turbines will be visible, based on the relief of the surrounding study area (45km from the outer turbines). This is supported by producing and analysing wirelines - on show today - to give a clearer picture of what the new turbines would look like. The wirelines on show today also include the position and height of other wind farms in the area.

For the eventual planning application, we will produce photomontages from a number of representative viewpoints (VPs). These VPs will likely be the same VPs used for the original application to allow for a comparison between the two schemes, subject to agreement with Aberdeenshire Council.

We will show photomontages from several agreed VPs at the September exhibitions.

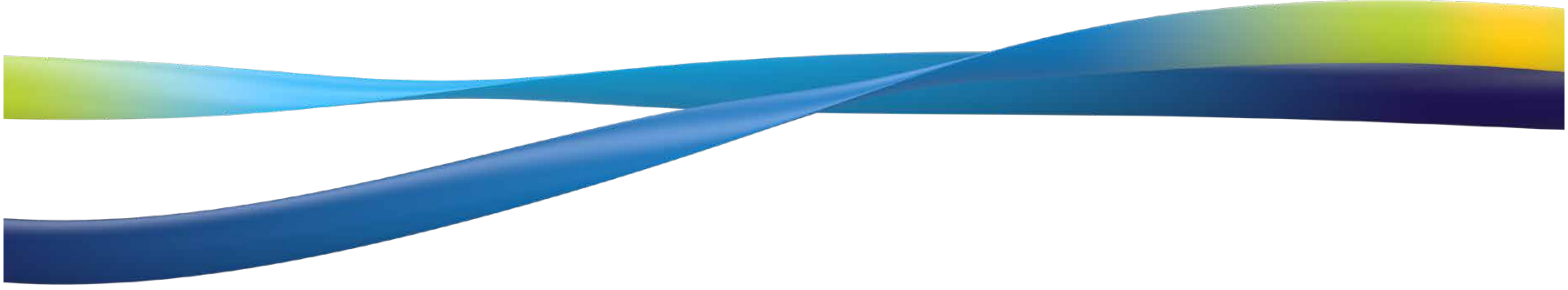


Redesign Craigneil Wind Farm ZTV

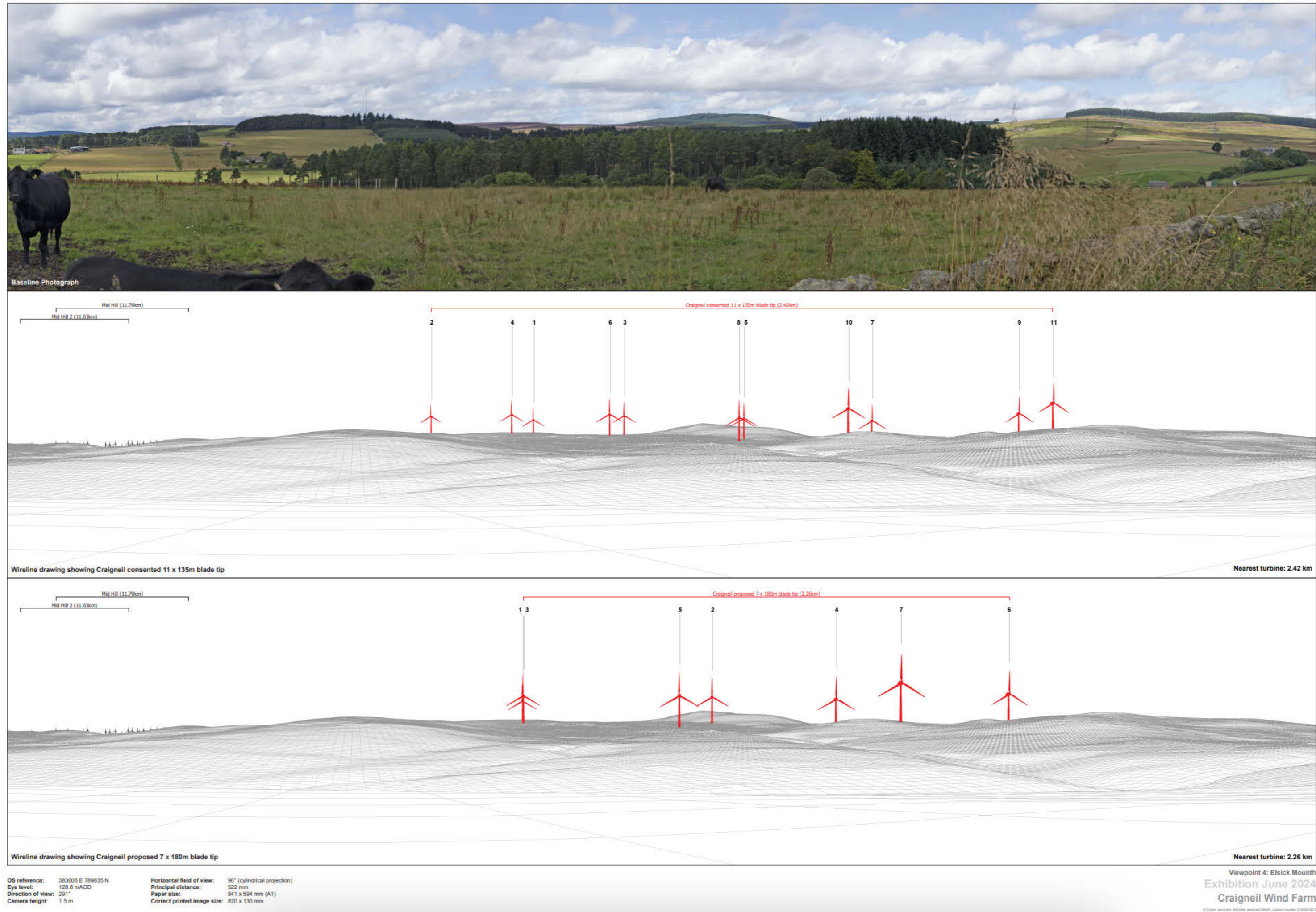


ZTV of consented Craigneil and redesigned Craigneil combined

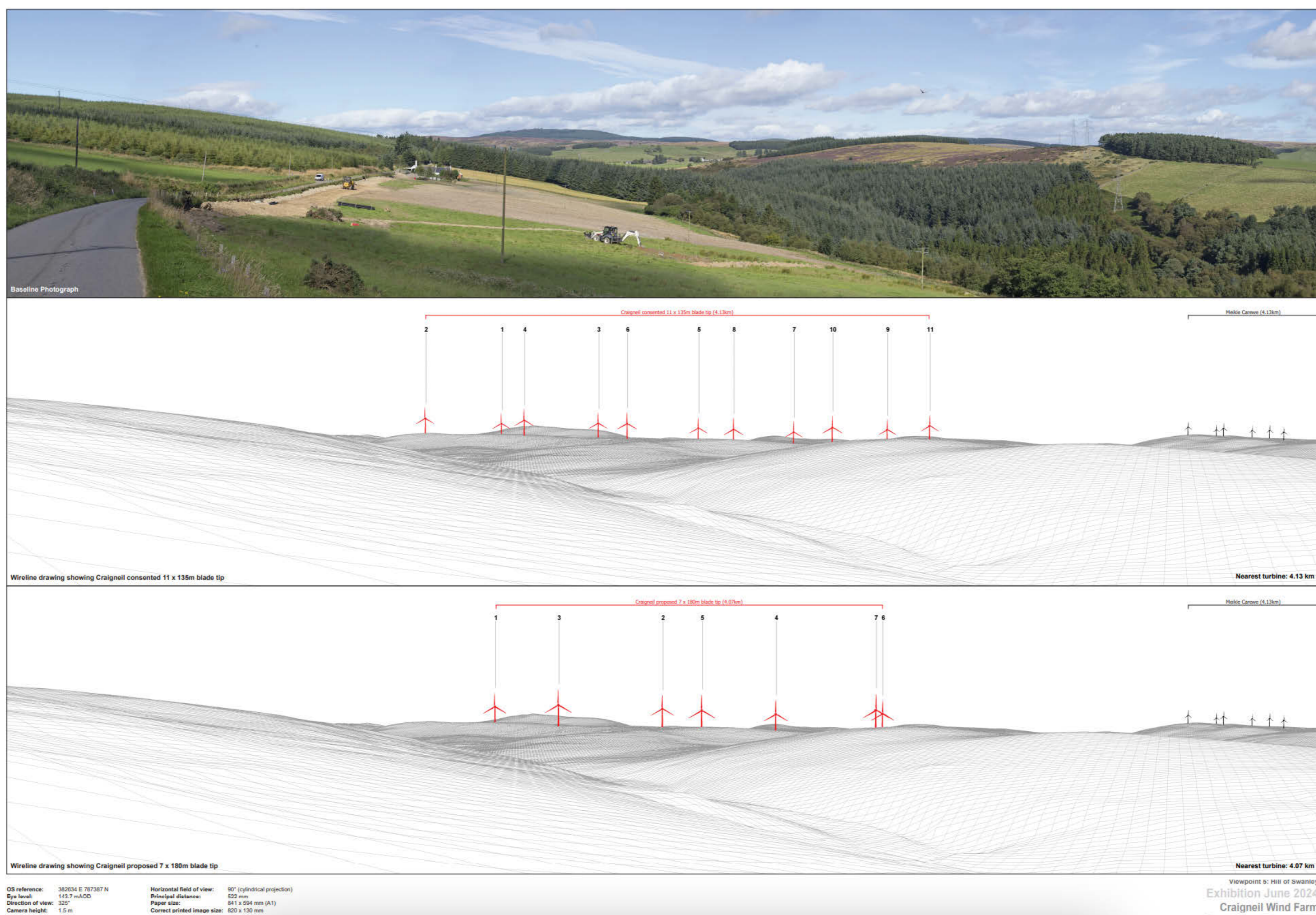
WIRELINES



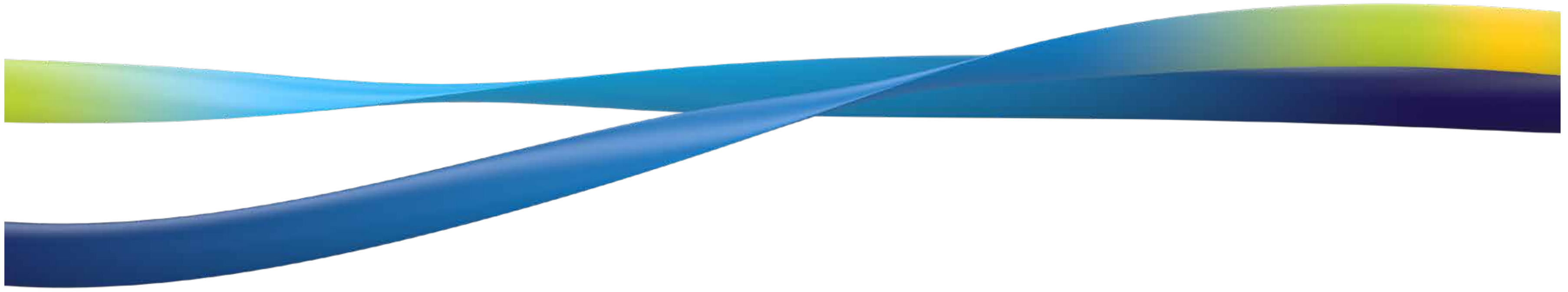
Viewpoint 4 - Elswick Mounth



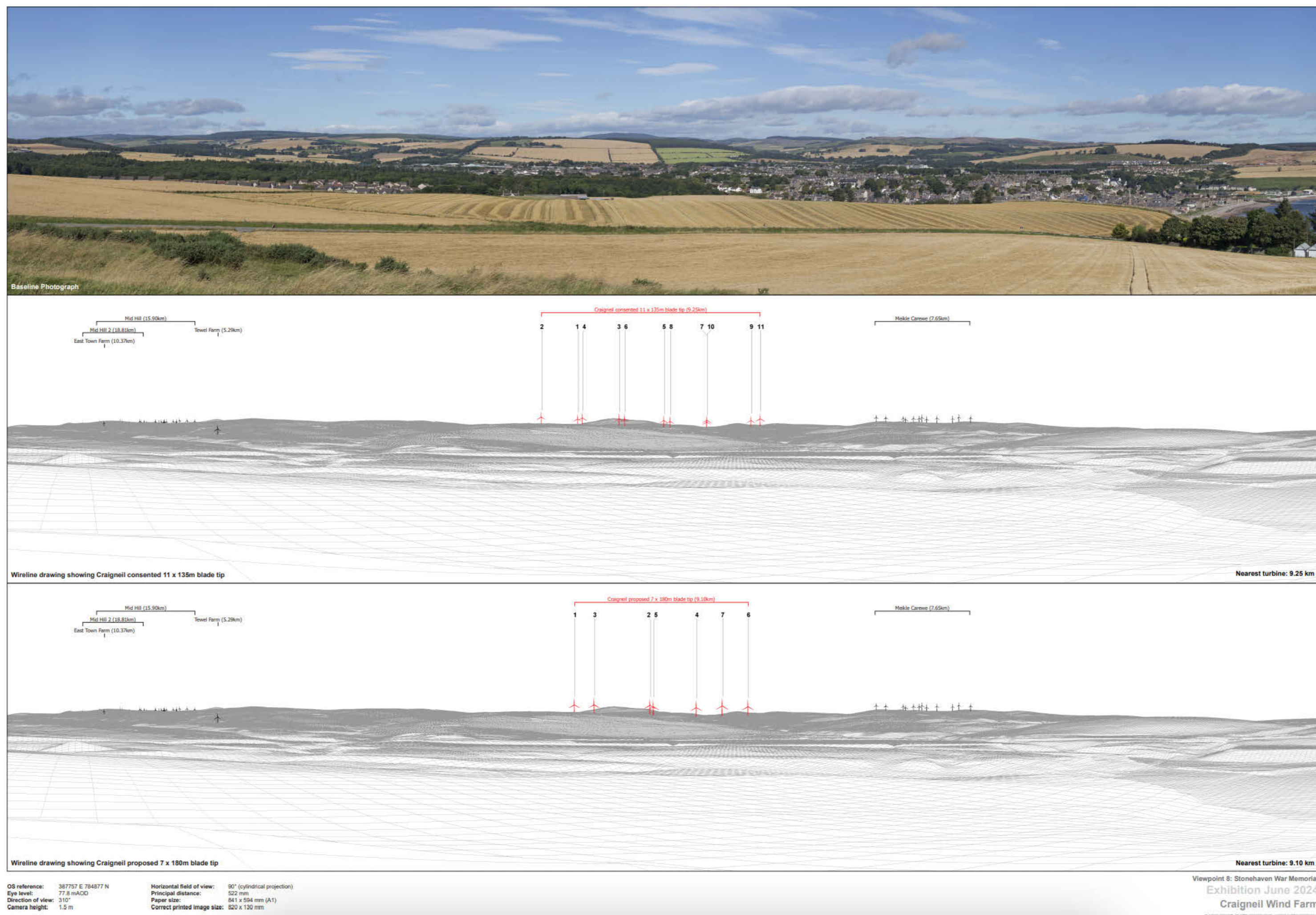
Viewpoint 5 - Hill of Swanley



WIRELINES



Viewpoint 8 - Stonehaven War Memorial



Viewpoint 15 - Drumoak



Energy for generations

THE LOCAL COMMUNITY



ESB will work closely with local communities, businesses and residents in seeking to ensure that the redesigned Craigneil Wind Farm will bring real benefits and help to meet national climate change targets.

Business, Employment and Investment

ESB would like to hear from businesses in Aberdeenshire to ensure that it can fully consider the skills and services of local people and suppliers if the redesigned Craigneil Wind Farm receives approval.

The opportunities available include those for:

- An engineering, procurement and construction contractor;
- Construction material suppliers: concrete, aggregate and building materials;
- Electrical contractors: supply and installation of plant, cabling, earthing, etc;
- Plant and equipment hire contractors: excavation earthworks, cranes, welfare units, etc;
- Labour hire companies: engineers, plant operatives and general labourers; and
- Transport: taxis and minibuses for local labourers.

Local accommodation providers

Construction projects of this nature inevitably require some specialist technicians from outside the area, so they will require local accommodation and catering facilities.

To be considered, please register with the local suppliers' database on our project website: www.esbenergy.co.uk/craigneil-wind-farm

Community Benefit Fund

ESB is committed to community benefit. ESB will set up a community benefit fund to the value of £5,000 per installed MW (index-linked) meaning £200,000 every year to the local area.

If there is interest in the community, we will consider an option to bring forward a lump sum from part of the Community Benefit Fund at the start of the project being operational, meaning that a large fund would be available at the start of the development to quickly assist with community projects.

Community Shareholding

We are committed to offering Community Shared Ownership of Craigneil Wind Farm, giving the community the opportunity to invest into the development and Craigneil being a shared ownership wind farm.

We hope to progress and sign a Memorandum of Understanding with community representatives to underline our commitment on community benefit and shared ownership.



NEXT STEPS



Thank you for attending today's exhibition event and please consider filling out a feedback form or providing comments to one of the team at today's event.

This exhibition is to gather comments and feedback on the proposal to help inform the redesign of the Craigneil Wind Farm. We will hold a second set of public exhibition events, planned for September 2024, which will include more information on the project and how we have taken into account feedback.

The closing date for comments for this exhibition round is **26 July 2024**.

Comments should be made to ESB and do not constitute a formal representation. An opportunity to make a formal representation to Aberdeenshire Council will exist if a subsequent planning application is made.

ESB hopes to submit its application for the redesigned Craigneil Wind Farm to Aberdeenshire Council towards the end of 2024.

Residents and community groups will then be able to make a representation on the proposals directly to Aberdeenshire Council.

In the meantime, we would welcome your feedback on our proposals for the redesigned Craigneil Wind Farm.

You can view more detailed information on our website:

www.esbenergy.co.uk/craigneil-wind-farm

Contact points

Email: craigneil@esb.ie

Post:

Sean Pearson (Project Manager)
ESB Asset Development UK Ltd
Inovo Building
121 George Street
Glasgow
G1 1RD



Energy for
generations