

WELCOME TO OUR PUBLIC CONSULTATION EVENT FOR CRAIGNEIL WIND FARM



ESB is holding our second round of consultation events for the proposed redesign of the consented Craigneil Wind Farm.

Today's exhibition includes updates on our proposals since our consultation in June 2024 and a response to feedback from the first consultation events.

Approximately 70 attendees visited the exhibition events in June 2024. The main feedback both verbally to the exhibition team and in feedback forms focused on community benefit interest, view from Cairn Mon Earn, the transport route and the project's relationship with the proposed SSEN infrastructure plans.

Following the first public consultation, we have undertaken further site-specific environmental and technical surveys. As a result of feedback from the first exhibition round and these studies, we have:

- provided photomontages of the redesigned wind farm from five viewpoint locations, whereas previously we had wireframes from four viewpoint locations;
- included a photomontage from Viewpoint 1 (Cairn Mon Earn) in response to specific requests at the June exhibitions;
- continuing to refine the design;
- transport route to site is still under careful consideration.

Comments and feedback from this round of exhibition events can be considered while we are still developing the final design of the proposal.

We expect to submit a planning application to Aberdeenshire Council in early 2025.

Site description

The Proposed Development is located approximately 6.5km to the north west of Stonehaven and 11km south east of Banchory.

The site is an exposed location, with predominantly open moorland and currently used for low intensity grazing.

Developer

ESB, established in 1927, is Ireland's part state-owned electricity utility company and is a leading independent power generator in the UK.

ESB has offices in Glasgow and is heavily involved in onshore wind, offshore wind, electric vehicle infrastructure and renewable heating systems, such as the low-carbon heating and cooling system installed in the V&A Dundee.



THE PROPOSED DEVELOPMENT

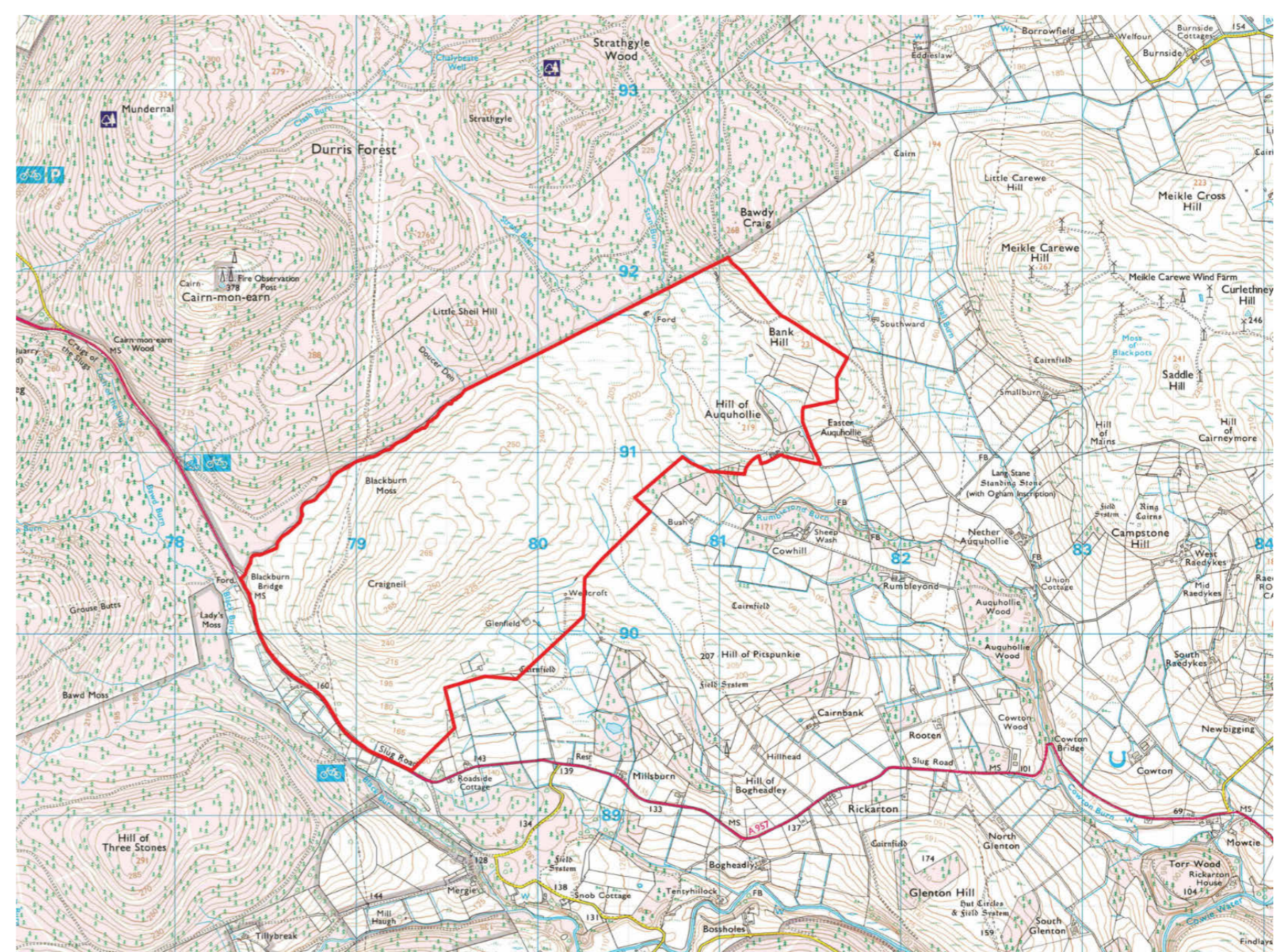


The Craigneil Wind Farm project received consent in September 2022. The consented Craigneil Wind Farm is for 11 turbines at 135m in height and is located approximately 6.5km to the north west of Stonehaven and 11km south east of Banchory.

The project was originally submitted into planning in early Summer 2018 and took over four years to achieve planning consent. Technology and commercial viability considerations have moved on since the original project design and we are now looking at a redesigned project of up to 7 turbines at a maximum of 180m to blade tip. In line with the terms of the consented project, ESB is likely to seek planning permission for a temporary period of 35 years. Today's exhibition showcases the redesign plans.

Since we first introduced the proposals, we have received a warm welcome in Stonehaven and the surrounding area. We have been proud to be the headline supporter of the Fein' Market in 2022, 2023 and most recently in 2024. We have also previously supported the Stonehaven Christmas Lights and Stonehaven Fireballs.

The redesign plans will generate more renewable electricity than the consented project - it will be able to generate the energy equivalent of approximately 25,000 homes. Further assessment will be undertaken to provide a finalised figure ahead of the new planning application submission.



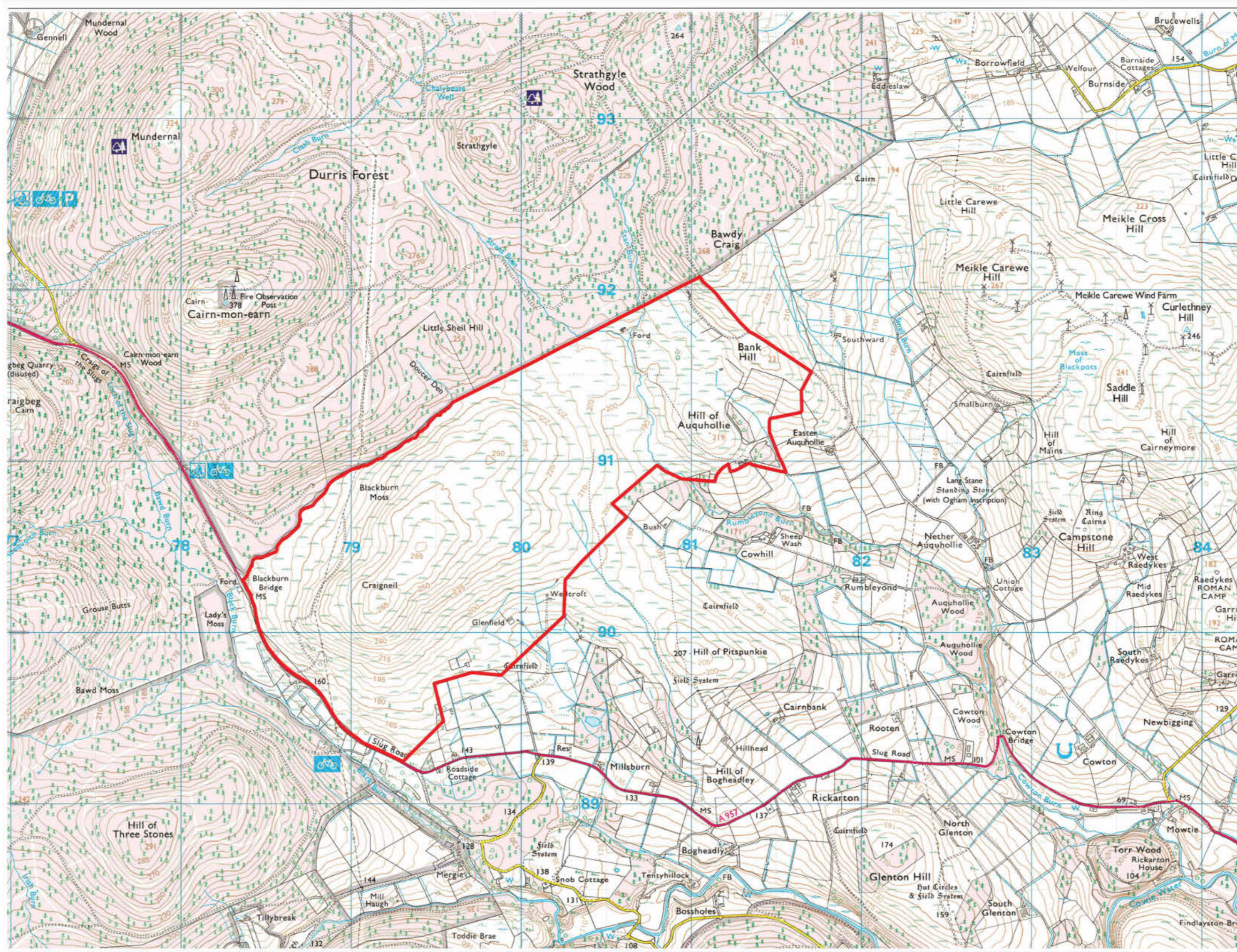
The redesigned Craigneil Wind Farm proposal comprises:

- Up to 7 turbines, with a maximum height of 180m to blade tip. Although fewer turbines, the generating capacity has increased from 35.2MW to around 40MW;
- On-site access tracks linking the turbines and connecting to the A957;
- On-site grid substation;
- Site office and staff welfare facilities;
- An offer of a Community Benefits Package and Shared Community Ownership.

There are no changes to the number, size or position of the turbines compared to the June 2024 exhibitions. Any changes between now and application submission are likely to be minor in nature only.



SITE BOUNDARY AND PROPOSED LAYOUT

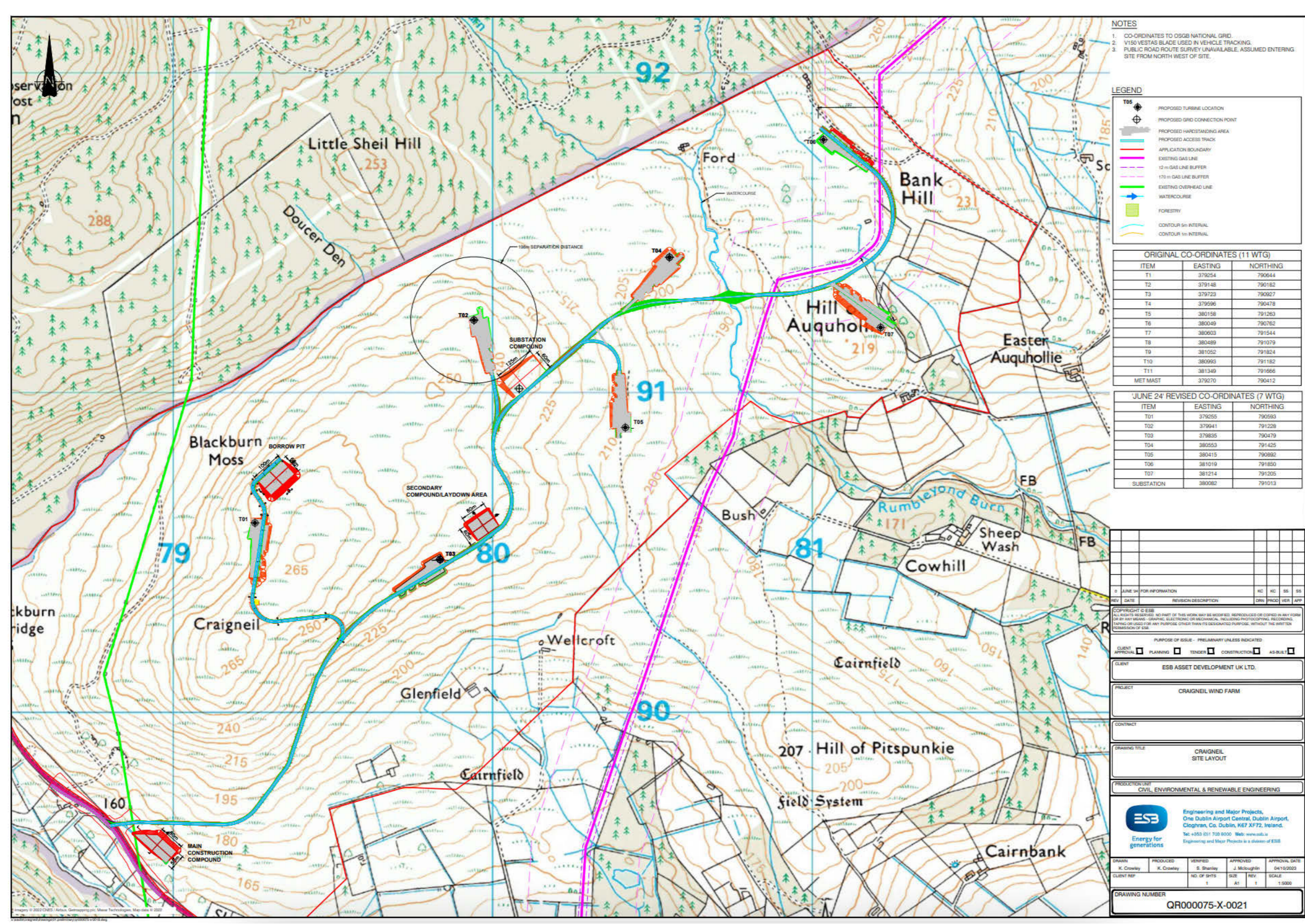


Title: Site Location Drawing
 Reference: CRSLP-1
 Date: 26-4-2024
 Scale: 1:10,000 @ A1

Legend
 Planning application red line boundary

Red line shows the extent of the application boundary.

The data and mapping displayed on this plan is the property of Savills UK Ltd and several other Data Providers, including, as applicable, Ordnance Survey, Historic England, Natural England. This plan must not be reproduced in whole or in part by photography or any other method without explicit consent from the copyright holder(s).
 Public sector information licensed under the Open Government Licence v3.0. © Savills (UK) Licence number: 10002424. © Crown copyright and database right 2018. © Historic England 2016. © Natural England copyright 2016.



Proposed turbine layout and related infrastructure.

There are no changes to the number, size or position of the turbines compared to the June 2024 exhibitions.



ENVIRONMENTAL IMPACT ASSESSMENT



ESB is using data from the consented project as well as new environmental studies to help shape the design and assess the potential impact of the redesigned project.

We will undertake an Environmental Impact Assessment (EIA) to assess the effects of the Proposed Development on the natural, physical and human environment. We are carrying out extensive surveys and work includes:

- Landscape character and visual assessment;
- Cultural heritage and archaeology;
- Ecological and ornithological;
- Geology, hydrogeology, hydrology and peat;
- Noise and vibration;
- Shadow Flicker;
- Traffic and transportation;
- Aviation and radar;
- Telecommunications and electromagnetic interference.

DEVELOPMENT TIMELINE

- **Summer 2018:** original Craigneil Wind Farm application submission (exhibitions held in 2016).
- **September 2022:** consent granted for Craigneil Wind Farm for 11 turbines, capacity at 35.2MW.
- **May 2024:** introduce plans for the redesign - up to 7 turbines, capacity at around 40MW.
- **Summer/Autumn 2024:** consultation with local community - exhibitions in June and September 2024.
- **Early 2025:** plan to submit the new application for the redesigned project.
- **Spring/Summer 2025:** expected decision by Aberdeenshire Council on redesigned project.



LANDSCAPE AND VISUAL IMPACT



Stock photography

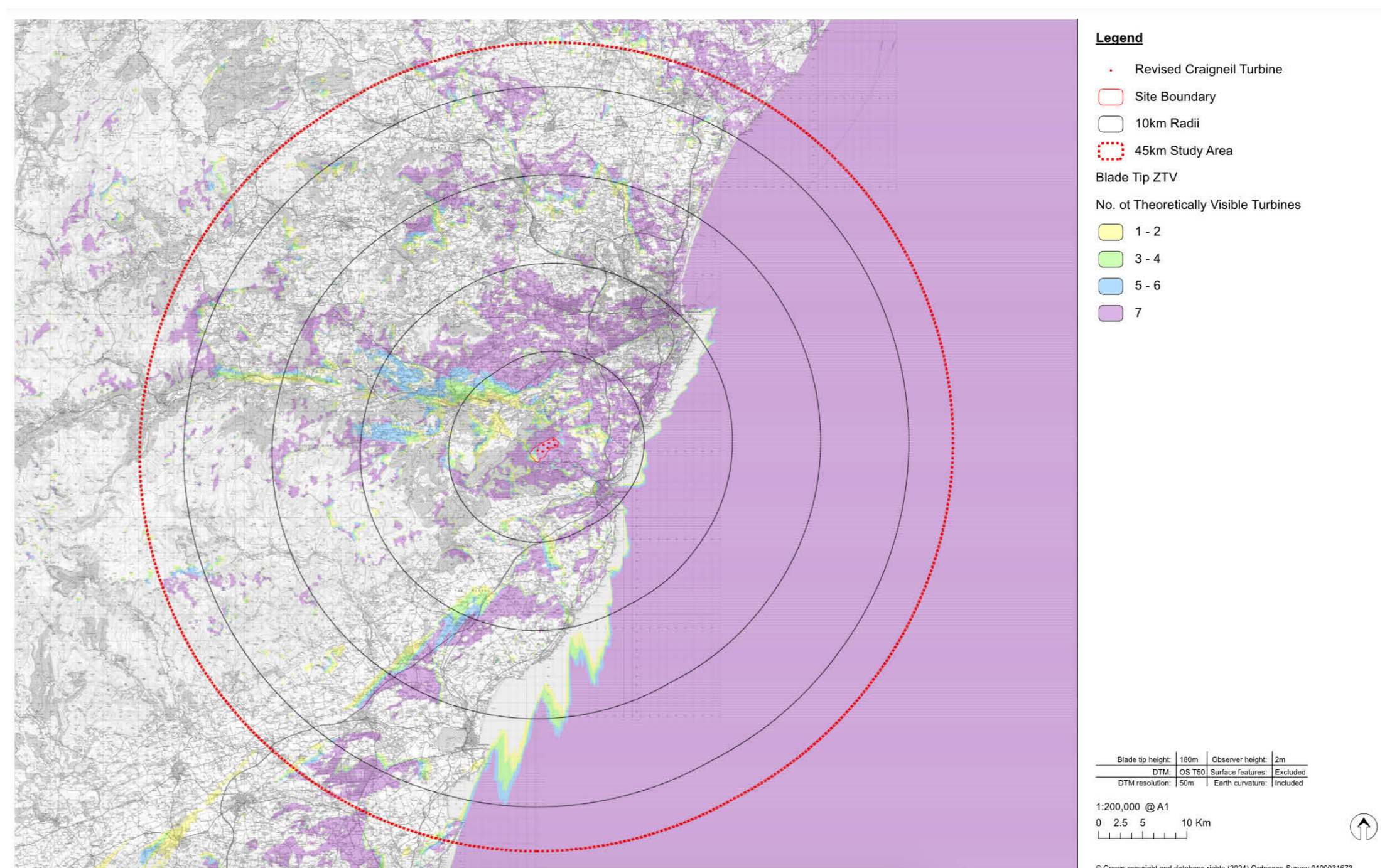
A new Landscape and Visual Impact Assessment will consider the potential effects of the Proposed Development on the surrounding landscape and visual amenity, including new photomontages.

A Zone of Theoretical Visibility (ZTV) is a computer-generated tool that establishes the likely extent of the visibility of a Proposed Development and key visual receptors.

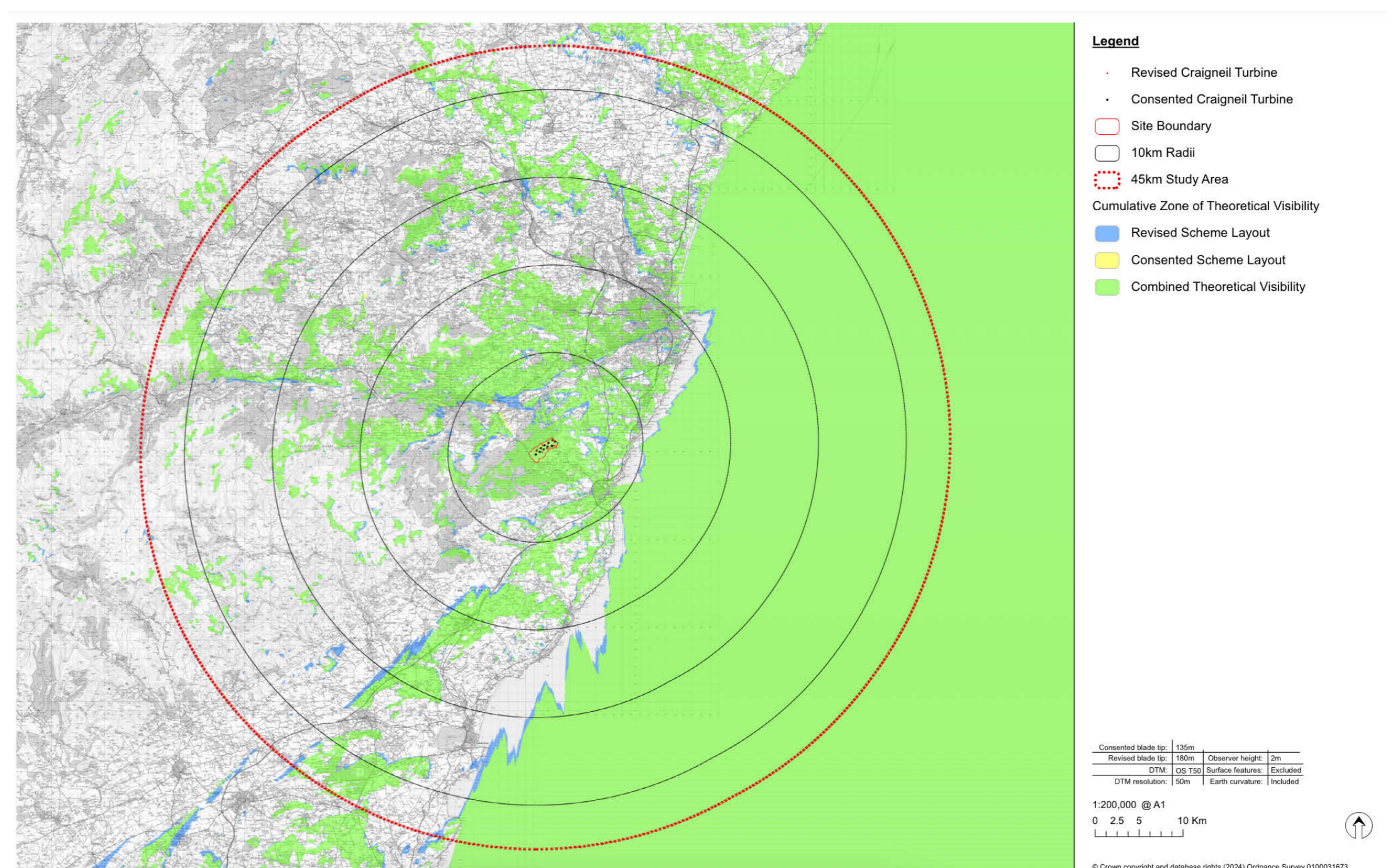
The ZTV indicates the areas where turbines will be visible, based on the relief of the surrounding study area (45km from the outer turbines). This is supported by producing and analysing wirelines and photomontages - on show today - to give a clearer picture of what the new turbines would look like. The wirelines on show today also include the position and height of other wind farms in the area.

For the eventual planning application, we will produce photomontages from a number of representative viewpoints (VPs). These VPs will likely be the same VPs used for the original application to allow for a comparison between the two schemes, and this approach has been agreed with Aberdeenshire Council.

We have photomontages from five VPs on display at today's exhibition.



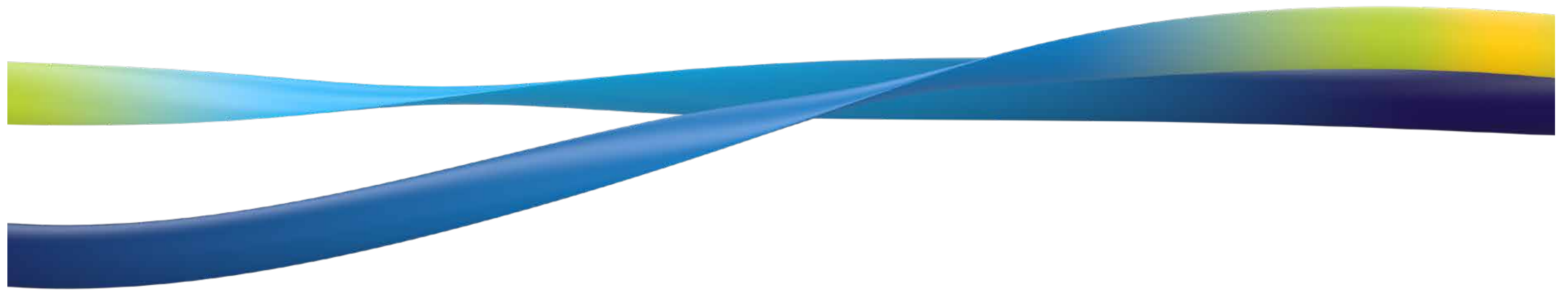
Redesign Craigneil Wind Farm ZTV, September 2024.



ZTV of consented Craigneil and redesigned Craigneil combined, September 2024.

CRAIGNEIL WIND FARM

PHOTOMONTAGES



Viewpoint 1 - Durris Forest (Cairn Mon Earn)



Baseline photograph



Photomontage

View from Durris Forest (Cairn Mon Earn)
Craigneil Wind Farm

OS reference:	37927 E 791920 N	Horizontal field of view:	53.5° (stereor projection)	Camera:	Canon EOS 6D Mark II
Eye level:	279 m AOD	Principal distance:	812.5 mm	Lens:	EF70-200mm F4 USM
Direction of view:	118°	Paper size:	841 x 297 mm (half A1)	Camera height:	1.5 m AOD
Nearest turbine:	1.6 km	Correct printed image size:	820 x 290 mm	Date and time:	30/07/2024, 17:53

Viewpoint 4 - Elswick Mounth



Baseline photograph



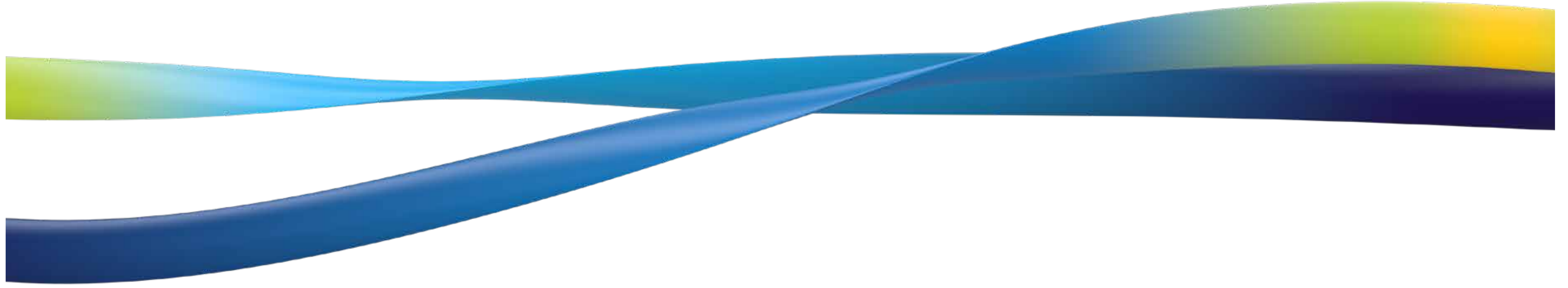
Photomontage

View from Elswick Mounth (Auquhollie Wood)
Craigneil Wind Farm

OS reference:	36307 E 78920	Horizontal field of view:	53.5° (stereor projection)	Camera:	Canon EOS 6D Mark II
Eye level:	128 m AOD	Principal distance:	812.5 mm	Lens:	EF70-200mm F4 USM
Direction of view:	230°	Paper size:	841 x 297 mm (half A1)	Camera height:	1.5 m AOD
Nearest turbine:	2.25 km	Correct printed image size:	820 x 290 mm	Date and time:	30/07/2024, 16:56



PHOTOMONTAGES



Viewpoint 5 - Hill of Swanley



Baseline photograph



Photomontage

OS reference:	302517 0 781614 N	Horizontal field of view:	53.8° (stereographic)	Camera:	Canon EOS 6D Mark II
Eye level:	142.4 m AOD	Principal distance:	812.5 mm	Lens:	EF50mm f1.4 USM
Direction of view:	325°	Paper size:	841 x 297 mm (half A1)	Camera height:	1.8 m AGL
Nearest turbine:	4.02 km	Correct printed image size:	820 x 260 mm	Date and time:	30/07/2024, 13:11

View from Hill of Swanley
Craigneil Wind Farm

Viewpoint 8 - Stonehaven War Memorial



Baseline photograph



Photomontage

OS reference:	307779 0 704889 N	Horizontal field of view:	53.8° (stereographic)	Camera:	Canon EOS 6D Mark II
Eye level:	77.7 m AOD	Principal distance:	812.5 mm	Lens:	EF50mm f1.4 USM
Direction of view:	215°	Paper size:	841 x 297 mm (half A1)	Camera height:	1.8 m AGL
Nearest turbine:	9.11 km	Correct printed image size:	820 x 260 mm	Date and time:	30/07/2024, 13:29

View from Stonehaven War Memorial
Craigneil Wind Farm



THE LOCAL COMMUNITY



ESB will work closely with local communities, businesses and residents in seeking to ensure that the redesigned Craigneil Wind Farm will bring real benefits and help to meet national climate change targets.

Business, Employment and Investment

ESB would like to hear from businesses in Aberdeenshire to ensure that it can fully consider the skills and services of local people and suppliers if the redesigned Craigneil Wind Farm receives approval.

The opportunities available include those for:

- An engineering, procurement and construction contractor;
- Construction material suppliers: concrete, aggregate and building materials;
- Electrical contractors: supply and installation of plant, cabling, earthing, etc;
- Plant and equipment hire contractors: excavation earthworks, cranes, welfare units, etc;
- Labour hire companies: engineers, plant operatives and general labourers; and
- Transport: taxis and minibuses for local labourers.

Local accommodation providers

Construction projects of this nature inevitably require some specialist technicians from outside the area, so they will require local accommodation and catering facilities.

To be considered, please register with the local suppliers' database on our project website: www.esbenergy.co.uk/craigneil-wind-farm

Community Benefit Fund

ESB is committed to community benefit. ESB will set up a community benefit fund to the value of £5,000 per installed MW (index-linked), meaning £200,000 every year to the local area once the project is operational.

If there is interest in the community, we will consider an option to bring forward a lump sum from part of the Community Benefit Fund at the start of the project being operational, meaning that a large fund would be available to quickly assist with community projects.

Community Shareholding

We are committed to offering Community Shared Ownership of Craigneil Wind Farm, giving the community the opportunity to invest into the development and Craigneil being a shared ownership wind farm.

We hope to progress and sign a Memorandum of Understanding with community representatives to underline our commitment on community benefit and shared ownership.



NEXT STEPS



Thank you for attending our second round of exhibition events and please consider filling out a feedback form or providing comments to one of the team at today's event.

This exhibition is to gather comments and feedback on the proposal to help inform the final design of the Craigneil Wind Farm.

The closing date for comments for this exhibition is 9 October 2024.

Comments should be made to ESB and do not constitute a formal representation to Aberdeenshire Council. An opportunity to make a formal representation to Aberdeenshire Council will exist if a subsequent planning application is made.

ESB hopes to submit its application for the redesigned Craigneil Wind Farm to Aberdeenshire Council in early 2025.

Residents and community groups will then be able to make a representation on the proposals directly to Aberdeenshire Council.

In the meantime, we would welcome your feedback on our proposals for the redesigned Craigneil Wind Farm.

You can view more detailed information on our website:

www.esbenergy.co.uk/craigneil-wind-farm

Contact points

Email: craigneil@esb.ie

Post:

Sean Pearson (Project Manager)
ESB Asset Development UK Ltd
Inovo Building
121 George Street
Glasgow
G1 1RD



Energy for generations